

CATEGORY	MATERIAL OR TYPE	1 MONTH CHANGE		3 MONTH CHANGE		6 MONTH CHANGE		12 MONTH CHANGE	
COMMODITY PRICES									
GENERAL PLASTICS	General Purpose PP (K8303)	3.63%	▲	27.39%	▲	21.95%	▲	6.38%	▲
	Food Grade PP	0.00%	=	-0.45%	▼	-5.17%	▼	-24.14%	▼
	General Purpose PS (GPPS/688B)	-2.53%	▼	21.35%	▲	17.39%	▲	9.09%	▲
	High Impact PS (Chi Mei PH88)	-8.18%	▼	13.48%	▲	8.60%	▲	-23.48%	▼
	PE Injection (LD400/Injection)	-4.81%	▼	-1.00%	▼	5.88%	▲	-13.16%	▼
	HDPE	0.00%	=	2.83%	▲	9.00%	▲	-2.68%	▼
	PET	2.04%	▲	-3.85%	▼	-10.71%	▼	1.21%	▲
	PVC (S700)	-1.07%	▼	3.15%	▲	3.15%	▲	3.15%	▲
ENGINEER PLASTICS	ABS (AC-800)	0.00%	=	0.00%	=	0.00%	=	0.00%	=
	Nylon (PA66)	-5.36%	▼	-3.64%	▼	0.00%	=	-12.83%	▼
	POM (FM090500P)	0.00%	=	0.00%	=	0.00%	=	-7.69%	▼
	PC (L-1250Y)	-3.33%	▼	-3.33%	▼	4.50%	▲	-2.83%	▼
	PA6 (1013B)	-5.62%	▼	-12.95%	▼	-24.66%	▼	-32.80%	▼
RUBBER	Rubber Blanket	5.85%	▲	6.47%	▲	3.43%	▲	-10.26%	▼
	Synthetic Rubber	15.00%	▲	43.75%	▲	15.00%	▲	-10.71%	▼
	Tire Rubber (SCR5)	15.46%	▲	13.81%	▲	-4.40%	▼	-25.73%	▼
	Latex	-4.51%	▼	-11.29%	▼	-19.12%	▼	-29.99%	▼
STEEL & IRON	Cold Roll Steel Sheet (1mm*1250*2500/ST12)	15.63%	▲	34.55%	▲	42.31%	▲	-0.80%	▼
	Cold Rolled Steel Plate-Commercial	12.80%	▲	29.82%	▲	19.35%	▲	-3.90%	▼
	Cold Roll Steel Tube (22*1.5)	29.07%	▲	48.66%	▲	29.07%	▲	-12.37%	▼
	Hot Roll Steel Sheet (3mm*1250*C/Q235)	17.24%	▲	41.67%	▲	53.00%	▲	13.33%	▲
	Hot Rolled Steel Plate-Commercial	17.73%	▲	38.91%	▲	47.56%	▲	10.67%	▲
	Hot Roll Steel Tube (22*1.5)	14.75%	▲	25.00%	▲	25.00%	▲	-7.89%	▼
	Steel Wire (D6.5~10/Q235)	17.24%	▲	41.67%	▲	54.55%	▲	27.50%	▲
	Pig Iron	0.00%	=	-6.45%	▼	-19.44%	▼	-30.95%	▼
STAINLESS STEEL	Stainless Steel Sheet (201)	9.40%	▲	19.85%	▲	14.79%	▲	0.62%	▲
	Stainless Steel Sheet (304)	13.82%	▲	16.67%	▲	12.90%	▲	1.45%	▲
	Stainless Steel Tube (304) Frosted (φ76*4-6)	0.61%	▲	0.79%	▲	0.30%	▲	-3.78%	▼
	Stainless Steel Sheet (410)	1.41%	▲	1.41%	▲	1.41%	▲	4.35%	▲
	Stainless Steel Sheet (420)	7.83%	▲	7.83%	▲	5.29%	▲	-7.73%	▼
	Stainless Steel Sheet (430)	-2.07%	▼	5.97%	▲	3.65%	▲	-11.25%	▼
ALUMINUM	Aluminum Ingots (A00)	11.92%	▲	22.88%	▲	24.17%	▲	-5.16%	▼
	Aluminum 1060 (1000*2000*5)	7.93%	▲	14.34%	▲	19.31%	▲	-7.05%	▼
	Aluminum 3003 (1000*2000*5)	6.93%	▲	13.79%	▲	16.63%	▲	-5.05%	▼
	Aluminum 6061 (φ178)	5.92%	▲	11.68%	▲	50.19%	▲	35.53%	▲
OTHER METALS	Zinc Alloy (#3)	7.19%	▲	15.34%	▲	7.48%	▲	2.14%	▲
	Brass Tube (H62 φ8-90mm)	-1.83%	▼	1.70%	▲	-6.26%	▼	-25.07%	▼
	Brass Rod (H59 φ 6-55mm)	0.34%	▲	0.68%	▲	-8.40%	▼	-20.94%	▼
	Copper (#1)	1.60%	▲	5.51%	▲	-3.61%	▼	-15.48%	▼
	Nickel (#1)	8.63%	▲	5.85%	▲	-5.61%	▼	-27.24%	▼
WOOD	MDF*1220*2440*8mm	0.00%	=	0.00%	=	0.00%	=	0.00%	=
	Fir	0.00%	=	0.00%	=	0.00%	=	-3.74%	▼
	White Oak	0.00%	=	0.00%	=	0.00%	=	-1.07%	▼
	Pine	0.00%	=	0.00%	=	0.00%	=	-2.06%	▼

CATEGORY	MATERIAL OR TYPE	1 MONTH CHANGE		3 MONTH CHANGE		6 MONTH CHANGE		12 MONTH CHANGE	
PAPER	Kraft (80g)	0.00%	=	0.00%	=	-4.76%	▼	0.00%	=
	Corrugated (140g A Grade)	0.00%	=	0.70%	▲	0.70%	▲	0.70%	▲
	White Cardboard (250g)	0.00%	=	0.00%	=	0.00%	=	1.67%	▲
	Gray Cardbord (250g)	0.00%	=	0.00%	=	0.00%	=	6.98%	▲
	Art Paper (157g)	0.00%	=	0.00%	=	-1.82%	▼	-3.57%	▼
TEXTILE FABRICS	Cotton (129)	3.66%	▲	-1.76%	▼	-6.41%	▼	-8.84%	▼
	100% Cotton Fabric	0.00%	=	0.00%	=	0.00%	=	0.00%	=
	100% Polyester Fabric	-1.91%	▼	-26.67%	▼	-30.94%	▼	-31.56%	▼
	T/C Fabric	0.00%	=	0.00%	=	0.00%	=	0.00%	=
	Non-woven PP Fabric	0.00%	=	0.00%	=	0.00%	=	0.00%	=
CERAMICS	Feldspar	0.00%	=	0.00%	=	0.00%	=	-6.67%	▼
	Kaolin	0.00%	=	0.00%	=	0.00%	=	-4.88%	▼
	Quartz	0.00%	=	0.00%	=	2.70%	▲	5.56%	▲
	Alumina	2.03%	▲	19.64%	▲	-9.46%	▼	-22.84%	▼
LABOR RATES	China Labor	0.00%	=	0.00%	=	0.00%	=	2.20%	▲
	Bangladesh Labor	0.00%	=	0.00%	=	0.00%	=	0.00%	=
	Thailand Labor	0.00%	=	0.00%	=	0.00%	=	0.00%	=
FUEL & POWER	China Petroleum Price	-1.38%	▼	-13.86%	▼	-22.70%	▼	-31.90%	▼
	China Diesel Oil	0.00%	=	-4.63%	▼	-4.63%	▼	-12.27%	▼
	Natural Gas	1.79%	▲	-10.38%	▼	-14.16%	▼	-29.63%	▼
	LPG Gas	3.80%	▲	-17.27%	▼	-17.77%	▼	-30.00%	▼
OCEAN FREIGHT	Shanghai/Ningbo/Xiamen to Chicago-40'	0.00%	=	-6.45%	▼	-21.80%	▼	-21.80%	▼
	Shanghai/Ningbo/Xiamen to Long Beach-40'	0.00%	=	-14.23%	▼	-42.61%	▼	-42.61%	▼
CURRENCY EXCHANGE RATES	USD-CNY (China RMB)	0.45%	▼	-1.57%	▲	2.46%	▼	4.36%	▼
	USD-BDT (Bangladesh Taka)	0.10%	▼	-0.81%	▲	0.84%	▼	0.67%	▼
	USD-INR (India Rupees)	0.38%	▼	-2.16%	▲	1.53%	▼	4.46%	▼
	USD-TWD (Taiwan New Dollars)	0.33%	▼	-3.54%	▲	-0.43%	▲	5.38%	▼
	USD-THB (Thailand Baht)	-0.50%	▲	-2.12%	▲	-1.81%	▲	5.70%	▼
	USD-VND (Vietnam Dong)	-0.02%	▲	0.25%	▼	-0.12%	▲	3.21%	▼
	EUR-CNY	1.00%	▼	4.06%	▼	6.61%	▼	6.98%	▼
KEY INDEXES									
PURCHASING MANAGERS INDEX (PMI)-Manufacturing		APRIL, 2016	MARCH, 2016	1 MONTH CHANGE	12 MONTH CHANGE				
CHINA	(CFLP) China Fed of Logistics & Purchasing	50.1	50.2	-0.20%	0.00%				
CHINA	(HSBC) Hongkong / Caixin/Markit China Manufacturing	49.4	49.7	-0.63%	1.01%				
USA	(ISM) Institute of Supply Maangement	50.8	51.8	-2.02%	-1.36%				
CHINA TRADE, MANUFACTURING & CONSUMER DATA		MARCH, 2016	FEBRUARY, 2016	1 MONTH CHANGE	12 MONTH CHANGE				
* Data Lags One Month									
Imports		131.0	93.6	40.0%	-7.4%				
Exports		160.8	126.1	27.5%	11.2%				
China Producer Price Index (PPI)		95.7	95.1	0.6%	0.3%				
China Consumer Price Index (CPI)		102.3	102.3	0.0%	0.9%				

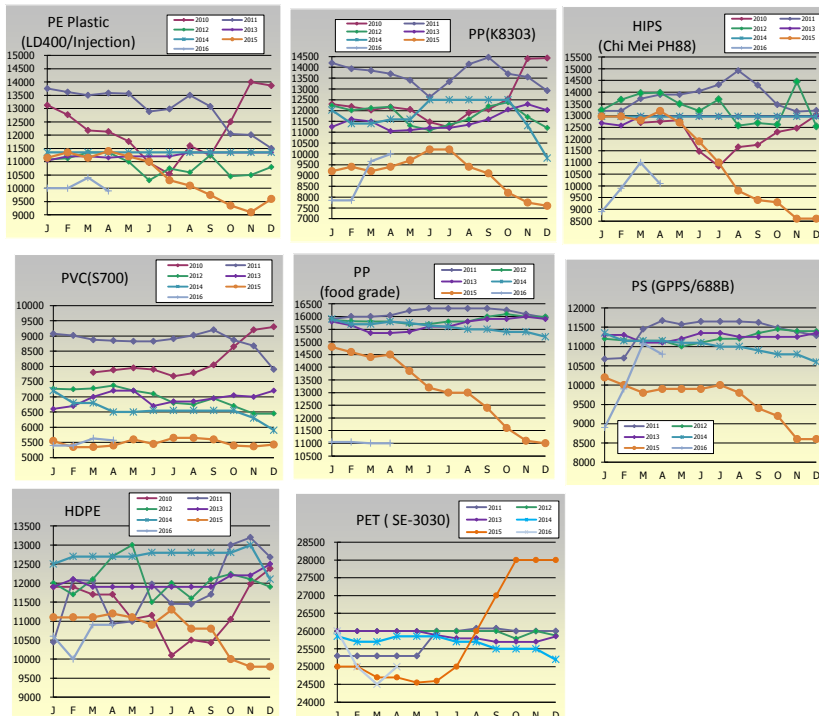
 Data from : www.chinaccm.com, www.xe.com and other public and private sources

▼---Favorable Trend ▲---Unfavorable Trend

Raw Material Report (¥/T)

2010																	
Material	J	F	M	A	M	J	J	A	S	O	N	D					
PE Plastic (LD400/Injection)	13125	12767	12175	12130	11763	10963	10540	11600	11240	12500	14000	13860					
PP (K8303)	12300	12183	12025	12160	12050	11475	11230	11900	12060	12533	14400	14430					
HIPS (Chi Mei PH88)			12700	12750	12800	11475	10840	11663	11750	12300	12463	13030					
PVC (S700)			7800	7880	7950	7900	7680	7788	8050	8650	9200	9300					
PP (Food grade)																	
PS (GPPS/6888)																	
HDPE	11900	11900	11700	11700	11050	11150	10100	10500	10427	11044	11978	12381					
2011																	
Material	J	F	M	A	M	J	J	A	S	O	N	D					
PE Plastic (LD400/Injection)	13750	13617	13500	13580	13563	12888	12980	13500	13080	12050	12013	11500					
PP (K8303)	14200	13933	13850	13700	13400	12625	13340	14150	14460	13700	13550	12920					
HIPS (Chi Mei PH88)	13200	13200	13725	13965	13900	14050	14320	14918	14300	13467	13175	13220					
PVC (S700)	9075	9017	8875	8850	8825	8825	8910	9025	9200	8867	8675	7900					
PP (Food grade)	15900	16000	16000	16040	16230	16320	16320	16320	16320	16253	16095	15960					
PS (GPPS/6888)	10675	10700	11450	11670	11575	11650	11650	11650	11625	11483	11381	11283					
HDPE	10449	12084	12060	10930	10991	11972	11455	11445	11700	13000	13200	12680					
PET (SE-3030)	25300	25300	25300	25300	25300	26000	26000	26000	26078	26076	26000	26000					
2012																	
Material	J	F	M	A	M	J	J	A	S	O	N	D					
PE Plastic (LD400/Injection)	11083	11125	11350	11350	11000	10300	10750	10600	11250	10450	10500	10800					
PP (K8303)	12233	12013	12120	12175	11300	11100	11350	11600	12200	12390	11700	11200					
HIPS (Chi Mei PH88)	13233	13675	13960	13975	13500	13200	13700	12575	12685	12620	14448	12540					
PVC (S700)	7267	7250	7280	7375	7200	7100	6800	6750	6950	6700	6450	6450					
PP (Food grade)	15870	15818	15800	15800	15700	15700	15800	15800	16000	16100	16000	16000					
PS (GPPS/6888)	11200	11163	11150	11150	11000	11100	11200	11200	11350	11450	11400	11400					
HDPE	12000	11700	12100	12700	13000	11500	12000	11600	12100	12240	12100	11900					
PET (SE-3030)	26000	26000	26000	26000	26000	26000	26000	26000	26000	25785	26000	25876					
2013																	
Material	J	F	M	A	M	J	J	A	S	O	N	D					
PE Plastic (LD400/Injection)	11050	11200	11200	11150	11200	11200	11200	11350	11350	11350	11350	11350					
PP (K8303)	11250	11600	11500	11050	11100	11200	11200	11350	11600	12050	12300	12020					
HIPS (Chi Mei PH88)	12680	12575	12965	12965	12965	12965	12965	12965	12965	12965	12965	12965					
PVC (S700)	6600	6700	7000	7200	7200	6700	6850	6850	6950	7050	7000	7200					
PP (Food grade)	15800	15650	15350	15350	15400	15600	15600	15800	15900	15900	16000	15900					
PS (GPPS/6888)	11300	11300	11100	11100	11200	11350	11350	11250	11250	11250	11250	11350					
HDPE	11900	12100	11900	11900	11900	11900	11900	11900	11900	12200	12200	12500					
PET (SE-3030)	26000	26000	26000	26000	26000	25882	25800	25800	25700	25700	25700	25850					
2014																	
Material	J	F	M	A	M	J	J	A	S	O	N	D					
PE Plastic (LD400/Injection)	11350	11350	11350	11350	11350	11350	11350	11350	11350	11350	11350	11350					
PP (K8303)	12020	11400	11400	11600	11600	12500	12500	12500	12500	12500	11300	9800					
HIPS (Chi Mei PH88)	12965	12965	12965	12965	12965	12965	12965	12965	12965	12965	12965	12965					
PVC (S700)	7200	6800	6800	6500	6500	6550	6550	6550	6550	6550	6300	5900					
PP (Food grade)	15900	15700	15700	15800	15750	15650	15600	15500	15500	15400	15400	15200					
PS (GPPS/6888)	11350	11150	11150	11150	11100	11100	11000	11000	10900	10800	10800	10600					
HDPE	12500	12700	12700	12700	12700	12800	12800	12800	12800	12800	13000	12100					
PET (SE-3030)	25850	25700	25700	25850	25850	25850	25700	25700	25500	25500	25500	25200					
2015																	
Material	J	F	M	A	M	J	J	A	S	O	N	D					
PE Plastic (LD400/Injection)	11150	11350	11150	11400	11200	11000	10300	10100	9750	9350	9100	9600					
PP (K8303)	9200	9400	9200	9400	9700	10200	10200	9400	9100	8200	7750	7600					
HIPS (Chi Mei PH88)	12965	12965	12800	13200	12700	11900	11000	9800	9400	9300	8600	8600					
PVC (S700)	5550	5350	5350	5400	5600	5450	5650	5650	5600	5400	5370	5430					
PP (Food grade)	14800	14600	14400	14500	13850	13200	13000	13000	12400	11600	11100	11000					
PS (GPPS/6888)	11000	11000	9800	9900	9900	9900	10000	9800	9400	9200	8600	8600					
HDPE	11100	11100	11100	11200	11100	10900	11300	10800	10800	10000	9800	9800					
PET (SE-3030)	25000	25000	24700	24700	24550	24600	25000	26000	27000	28000	28000	28000					
2016																	
Material	J	F	M	A	M	J	J	A	S	O	N	D	% Change 1 Month	% Change 3 Month	% Change 6 Month	% Change 12 Month	
PE Plastic (LD400/Injection)	10000	10000	10400	9900										-4.81%	-1.00%	5.88%	-13.16%
PP (K8303)	7850	7850	9650	10000										3.63%	27.39%	21.95%	6.38%
HIPS (Chi Mei PH88)	8900	9900	11000	10100										-8.18%	13.48%	8.60%	-23.48%
PVC (S700)	5400	5400	5630	5570										-1.07%	3.15%	3.15%	3.15%
PP (Food grade)	11050	11050	11000	11000										0.00%	-0.45%	-5.17%	-24.14%
PS (GPPS/6888)	8900	9900	11080	10800										-2.53%	21.35%	17.39%	9.09%
HDPE	10600	10000	10900	10900										0.00%	2.83%	9.00%	-2.68%
PET (SE-3030)	26000	25000	24500	25000										2.04%	-3.85%	-10.71%	1.21%

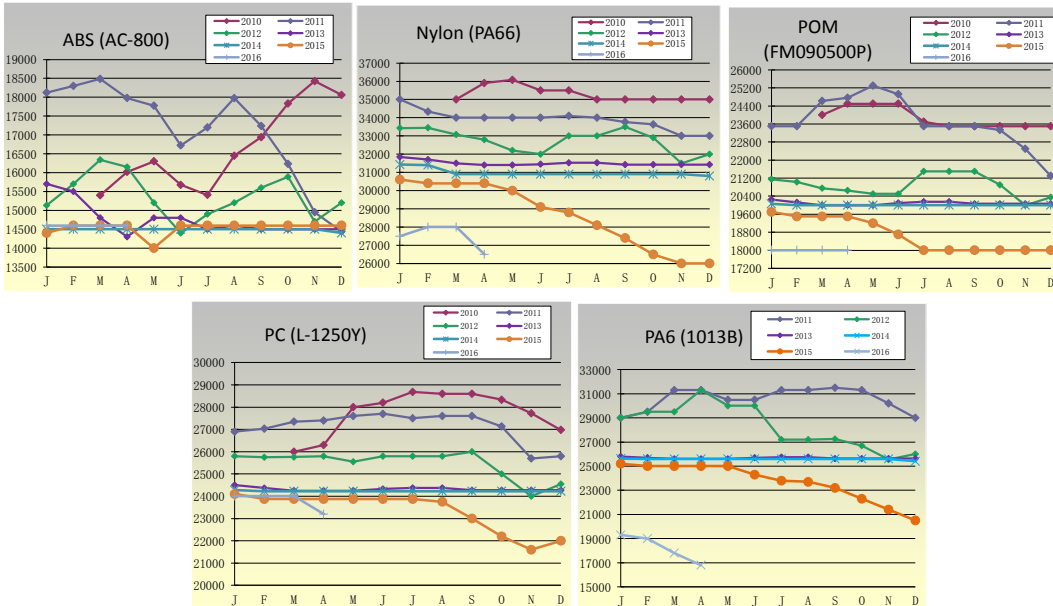
Data from: <http://www.chinacmc.com/>



Raw Material Report (¥/T)

2010																	
Material	J	F	M	A	M	J	J	A	S	O	N	D					
ABS (AC-800)			15400	16020	16300	15675	15410	16450	16940	17833	18425	18060					
Nylon (PA66)			35000	35900	36075	35500	35500	35000	35000	35000	35000	35000					
POM (FM090500P)			24000	24500	24500	24500	23700	23500	23500	23500	23500	23500					
PC (L-1250Y)			26000	26300	28000	28200	28680	28600	28600	28333	27725	26980					
PA6 (1013B)																	
2011																	
Material	J	F	M	A	M	J	J	A	S	O	N	D					
ABS (AC-800)	18125	18300	18488	17980	17775	16725	17200	17975	17240	16233	14950	14440					
Nylon (PA66)	35000	34333	34000	34000	34000	34000	34100	34000	33760	33633	33000	33000					
POM (FM090500P)	23500	23500	24625	24760	25300	24925	23500	23500	23500	23333	22500	21300					
PC (L-1250Y)	26900	27033	27350	27400	27600	27700	27500	27600	27600	27133	25700	25800					
PA6 (1013B)	29000	29500	31300	31300	30500	30500	31300	31300	31500	31300	30200	29000					
2012																	
Material	J	F	M	A	M	J	J	A	S	O	N	D					
ABS (AC-800)	15133	15700	16340	16150	15200	14400	14900	15200	15600	15890	14700	15200					
Nylon (PA66)	33433	33450	33080	32800	32200	32000	33000	33000	33500	32900	31500	32000					
POM (FM090500P)	21150	21025	20750	20650	20500	20500	21500	21500	21500	20900	20000	20350					
PC (L-1250Y)	25800	25750	25760	25800	25550	25800	25800	25800	26000	25000	24000	24550					
PA6 (1013B)	29000	29500	29500	31300	30000	30000	27200	27200	27250	26700	25550	26000					
2013																	
Material	J	F	M	A	M	J	J	A	S	O	N	D					
ABS (AC-800)	15700	15500	14800	14300	14800	14800	14500	14600	14500	14500	14500	14500					
Nylon (PA66)	31850	31700	31500	31400	31400	31450	31525	31525	31425	31425	31425	31425					
POM (FM090500P)	20250	20125	20000	20000	20000	20100	20150	20150	20060	20060	20060	20060					
PC (L-1250Y)	24500	24370	24250	24250	24250	24325	24375	24375	24275	24275	24275	24275					
PA6 (1013B)	25800	25700	25600	25600	25600	25700	25750	25750	25625	25625	25625	25625					
2014																	
Material	J	F	M	A	M	J	J	A	S	O	N	D					
ABS (AC-800)	14500	14500	14500	14500	14500	14500	14500	14500	14500	14500	14500	14400					
Nylon (PA66)	31425	31400	30900	30900	30900	30900	30900	30900	30900	30900	30900	30800					
POM (FM090500P)	20060	20000	20000	20000	20000	20000	20000	20000	20000	20000	20000	20000					
PC (L-1250Y)	24275	24225	24225	24225	24225	24225	24225	24225	24225	24225	24225	24225					
PA6 (1013B)	25625	25600	25600	25600	25600	25600	25600	25600	25600	25600	25600	25400					
2015																	
Material	J	F	M	A	M	J	J	A	S	O	N	D					
ABS (AC-800)	14400	14600	14600	14600	14000	14600	14600	14600	14600	14600	14600	14600					
Nylon (PA66)	30600	30400	30400	30400	30000	29100	28800	28100	27400	26500	26000	26000					
POM (FM090500P)	19700	19500	19500	19500	19200	18700	18000	18000	18000	18000	18000	18000					
PC (L-1250Y)	24100	23875	23875	23875	23875	23875	23875	23750	23000	22200	21600	22000					
PA6 (1013B)	25200	25000	25000	25000	25000	24300	23800	23700	23200	22300	21400	20500					
2016																	
Material	J	F	M	A	M	J	J	A	S	O	N	D	% Change 1 Month	% Change 3 Month	% Change 6 Month	% Change 12 Month	
ABS (AC-800)	14600	14600	14600	14600										0.00%	0.00%	0.00%	0.00%
Nylon (PA66)	27500	28000	28000	26500										-5.36%	-3.64%	0.00%	-12.83%
POM (FM090500P)	18000	18000	18000	18000										0.00%	0.00%	0.00%	-7.69%
PC (L-1250Y)	24000	24000	24000	23200										-3.33%	-3.33%	4.50%	-2.83%
PA6 (1013B)	19300	19000	17800	16800										-5.62%	-12.95%	-24.66%	-32.80%

Data from: <http://www.chinaccm.com/>



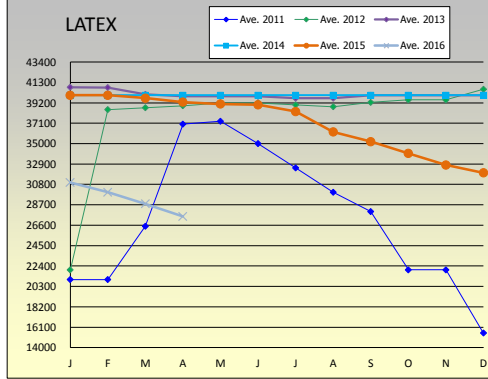
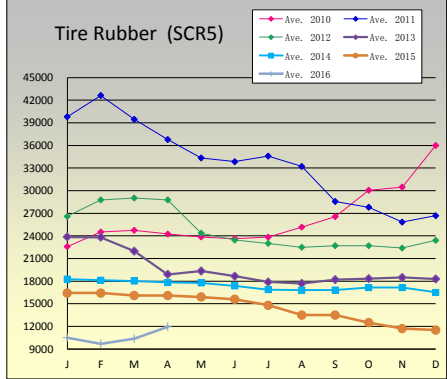
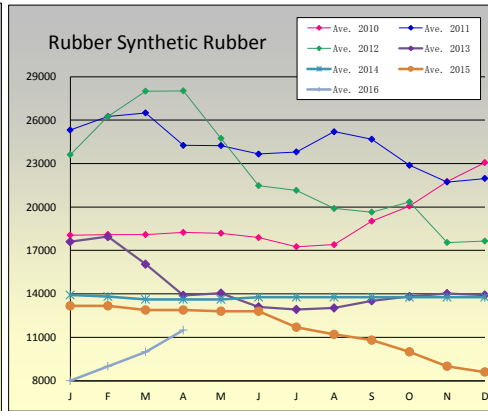
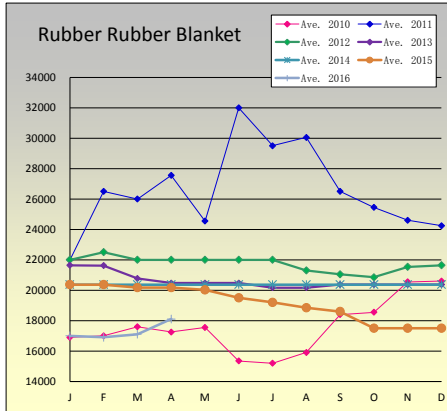
Rubber												% Change 1 Month	% Change 3 Month	% Change 6 Month	% Change 12 Month	
Rubber Blanket 广州橡胶垫 (¥/T)																
	J	F	M	A	M	J	J	A	S	O	N	D				
Ave. 2010	16900	17000	17600	17250	17550	15350	15200	15900	18400	18550	20550	20600				
Ave. 2011	22000	26500	26000	27550	24550	32000	29500	30050	26500	25450	24600	24240				
Ave. 2012	22000	22500	22000	22000	22000	22000	22000	21300	21050	20850	21540	21640				
Ave. 2013	21640	21620	20770	20470	20470	20470	20170	20170	20370	20370	20370	20370				
Ave. 2014	20370	20370	20370	20370	20370	20370	20370	20370	20370	20370	20370	20370				
Ave. 2015	20370	20370	20170	20170	20020	19500	19200	18850	18600	17500	17500	17500				
Ave. 2016	17000	16900	17100	18100									5.85%	6.47%	3.43%	-10.26%

Rubber												% Change 1 Month	% Change 3 Month	% Change 6 Month	% Change 12 Month	
Synthetic Rubber (合成橡胶) 顺丁胶 (¥/T)																
	J	F	M	A	M	J	J	A	S	O	N	D				
Ave. 2010	18056	18100	18095	18240	18185	17885	17255	17400	19015	20065	21765	23065				
Ave. 2011	25315	26250	26500	24250	24240	32660	23805	25200	24680	22880	21725	21970				
Ave. 2012	23620	26243	28000	28025	24738	21475	21150	19900	19650	20350	17550	17650				
Ave. 2013	17600	17950	16050	13900	14050	13100	12920	13020	13520	13820	14020	13920				
Ave. 2014	13920	13820	13620	13620	13620	13770	13770	13770	13770	13770	13770	13770				
Ave. 2015	13170	13170	12880	12880	12800	12800	11700	11200	10800	10000	9000	8600				
Ave. 2016	8000	9000	10000	11500									15.00%	43.75%	15.00%	-10.71%

Rubber												% Change 1 Month	% Change 3 Month	% Change 6 Month	% Change 12 Month	
Tire Rubber 轮胎用橡胶 (SCR5) (¥/T)																
	J	F	M	A	M	J	J	A	S	O	N	D				
Ave. 2010	22585	24515	24745	24255	23860	23650	23830	25170	26570	30050	30485	36000				
Ave. 2011	39800	42630	39460	36780	34330	33850	34590	33205	28565	27800	25830	26668				
Ave. 2012	26587	28773	29033	28775	24365	23445	23000	22500	22700	22700	22400	23400				
Ave. 2013	23860	23820	21980	18895	19345	18645	17895	17695	18195	18325	18485	18295				
Ave. 2014	18270	18120	18020	17820	17770	17370	16870	16820	16820	17140	17150	16500				
Ave. 2015	16420	16420	16090	16090	15900	15600	14800	13500	13500	12500	11700	11500				
Ave. 2016	10500	9700	10350	11950									15.46%	13.81%	-4.40%	-25.73%

LATEX												% Change 1 Month	% Change 3 Month	% Change 6 Month	% Change 12 Month	
乳胶 (¥/T)																
	J	F	M	A	M	J	J	A	S	O	N	D				
Ave. 2011	21000	21000	26500	37000	37300	35000	32500	30000	28000	22000	22000	15500				
Ave. 2012	22000	38500	38700	38900	39200	39200	39000	38800	39250	39500	39500	40600				
Ave. 2013	40800	40780	40080	39880	39880	39880	39680	39680	39980	39980	39980	39980				
Ave. 2014	39980	39980	39980	39980	39980	39980	39980	39980	39980	39980	39980	39980				
Ave. 2015	39980	39980	39680	39280	39080	39000	38300	36200	35200	34000	32800	32000				
Ave. 2016	31000	30000	28800	27500									-4.51%	-11.29%	-19.12%	-29.99%

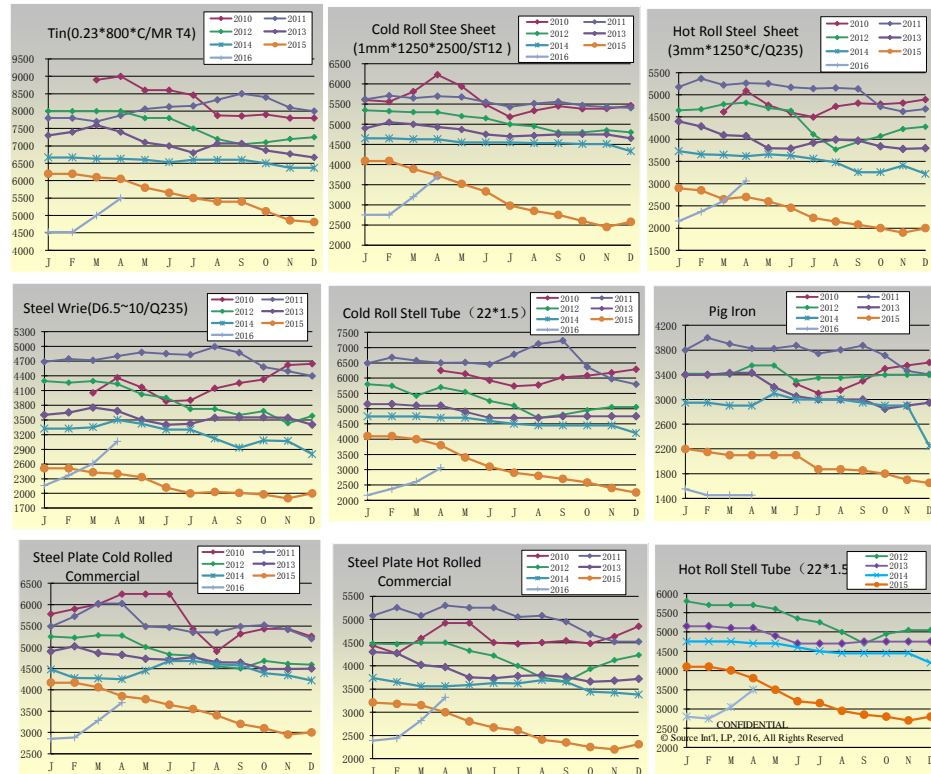
Data from: <http://www.chinacm.com/>



Raw Material Report (¥/T)

2010																
Material	J	F	M	A	M	J	J	A	S	O	N	D				
Tinplate (0.23*800*MR T4)			8900	9000	8600	8600	8460	7875	7860	7900	7800	7800				
Cold Roll Steel Sheet (1mm*1250*2500/ST12)	5603	5559	5809	6230	5938	5488	5180	5338	5450	5383	5388	5460				
Hot Roll Steel Sheet (3mm*1250*C/Q235)			4614	5088	4765	4600	4498	4738	4812	4790	4815	4892				
Steel Wire (D6.5-10/Q235)			4050	4357	4163	3880	3898	4143	4250	4325	4618	4644				
Cold Roll Steel Tube (22*1.5)				6250	6138	5925	5740	5775	6030	6083	6175	6290				
Pig Iron						3250	3100	3150	3300	3500	3550	3600				
Steel Plate Cold Rolled Commercial	5780	5897	6014	6248	6248	6248	5429	4903	5313	5430	5430	5255				
Steel Plate Hot Rolled Commercial	4440	4270	4590	4920	4920	4500	4470	4500	4540	4480	4630	4850				
2011																
Material	J	F	M	A	M	J	J	A	S	O	N	D				
Tinplate (0.23*800*MR T4)	7800	7800	7700	7880	8058	8125	8150	8325	8500	8400	8100	8000				
Cold Roll Steel Sheet (1mm*1250*2500/ST12)	5620	5710	5650	5696	5675	5550	5430	5513	5558	5467	5425	5410				
Hot Roll Steel Sheet (3mm*1250*C/Q235)	5173	5363	5218	5260	5250	5168	5138	5153	5132	4733	4623	4680				
Steel Wire (D6.5-10/Q235)	4683	4743	4713	4798	4875	4848	4828	4990	4868	4577	4493	4394				
Cold Roll Steel Tube (22*1.5)	6488	6683	6575	6500	6513	6450	6780	7125	7230	6367	5975	5800				
Hot Roll Steel Tube (22*1.5)												5800				
Pig Iron	3800	4000	3900	3825	3825	3875	3743	3803	3875	3715	3465	3409				
Steel Plate Cold Rolled Commercial	5489	5723	6026	6026	5488	5464	5347	5347	5487	5522	5416	5200				
Steel Plate Hot Rolled Commercial	5080	5250	5080	5300	5250	5250	5050	5080	4950	4680	4520	4520				
2012																
Material	J	F	M	A	M	J	J	A	S	O	N	D				
Tinplate (0.23*800*MR T4)	8000	8000	8000	8000	7800	7800	7500	7200	7050	7100	7200	7250				
Cold Roll Steel Sheet (1mm*1250*2500/ST12)	5350	5325	5300	5300	5200	5150	5000	4950	4800	4800	4850	4800				
Hot Roll Steel Sheet (3mm*1250*C/Q235)	4650	4675	4788	4820	4700	4640	4110	3770	3940	4070	4230	4280				
Steel Wire (D6.5-10/Q235)	4293	4258	4290	4233	4020	3950	3720	3720	3600	3680	3430	3380				
Cold Roll Steel Tube (22*1.5)	5800	5750	5420	5700	5550	5250	5100	4700	4800	4950	5050	5050				
Hot Roll Steel Tube (22*1.5)	5800	5700	5700	5700	5600	5350	5250	5000	4700	4950	5050	5050				
Pig Iron	3415	3415	3402	3550	3550	3300	3350	3350	3370	3400	3400	3400				
Steel Plate Cold Rolled Commercial	5250	5225	5280	5275	5005	4830	4800	4550	4500	4680	4610	4590				
Steel Plate Hot Rolled Commercial	4480	4465	4500	4500	4325	4220	4000	3750	3660	3930	4120	4230				
2013																
Material	J	F	M	A	M	J	J	A	S	O	N	D				
Tinplate (0.23*800*MR T4)	7300	7400	7600	7400	7100	7000	6800	7070	7070	6870	6770	6670				
Cold Roll Steel Sheet (1mm*1250*2500/ST12)	4900	5050	5000	4930	4870	4750	4720	4750	4750	4750	4750	4650				
Hot Roll Steel Sheet (3mm*1250*C/Q235)	4400	4290	4090	4070	3800	3790	3920	3990	3970	3840	3780	3800				
Steel Wire (D6.5-10/Q235)	3600	3650	3750	3680	3500	3400	3420	3540	3550	3550	3540	3400				
Cold Roll Steel Tube (22*1.5)	5150	5150	5100	5100	4900	4700	4700	4700	4750	4750	4750	4750				
Hot Roll Steel Tube (22*1.5)	5150	5150	5100	4900	4700	4700	4700	4700	4750	4750	4750	4750				
Pig Iron	3400	3400	3430	3430	3200	3050	3000	3000	3000	2850	2900	2950				
Steel Plate Cold Rolled Commercial	4900	5020	4860	4820	4730	4710	4770	4650	4640	4490	4490	4500				
Steel Plate Hot Rolled Commercial	4300	4270	4020	3970	3750	3730	3780	3800	3760	3660	3680	3720				
2014																
Material	J	F	M	A	M	J	J	A	S	O	N	D				
Tinplate (0.23*800*MR T4)	6670	6670	6630	6630	6600	6530	6600	6600	6600	6500	6370	6370				
Cold Roll Steel Sheet (1mm*1250*2500/ST12)	4650	4650	4630	4630	4550	4550	4530	4530	4530	4510	4510	4330				
Hot Roll Steel Sheet (3mm*1250*C/Q235)	3730	3660	3650	3620	3660	3630	3560	3480	3260	3260	3410	3220				
Steel Wire (D6.5-10/Q235)	3320	3320	3350	3500	3420	3300	3300	3120	2930	3080	3070	2800				
Cold Roll Steel Tube (22*1.5)	4750	4750	4750	4700	4600	4500	4450	4450	4450	4450	4450	4200				
Hot Roll Steel Tube (22*1.5)	4750	4750	4750	4700	4700	4600	4500	4450	4450	4450	4450	4200				
Pig Iron	2950	2950	2900	2900	3100	3000	3000	3000	2950	2900	2900	2250				
Steel Plate Cold Rolled Commercial	4480	4280	4270	4250	4450	4680	4680	4600	4570	4390	4340	4220				
Steel Plate Hot Rolled Commercial	3740	3650	3560	3560	3590	3630	3620	3690	3660	3440	3420	3380				
2015																
Material	J	F	M	A	M	J	J	A	S	O	N	D				
Tinplate (0.23*800*MR T4)	6200	6200	6100	6050	5800	5650	5500	5400	5400	5120	4860	4810				
Cold Roll Steel Sheet (1mm*1250*2500/ST12)	4090	4090	3890	3730	3520	3330	2980	2850	2750	2600	2450	2580				
Hot Roll Steel Sheet (3mm*1250*C/Q235)	2900	2850	2650	2700	2600	2460	2230	2150	2080	2000	1900	2000				
Steel Wire (D6.5-10/Q235)	2510	2510	2430	2400	2330	2120	2000	2030	2010	1980	1900	2000				
Cold Roll Steel Tube (22*1.5)	4100	4100	4000	3800	3400	3100	2900	2800	2700	2580	2400	2250				
Hot Roll Steel Tube (22*1.5)	4100	4100	4000	3800	3500	3200	3150	2950	2850	2800	2700	2800				
Pig Iron	2200	2150	2100	2100	2100	2100	1870	1870	1850	1800	1700	1650				
Cold Rolled Steel Plate Commercial	4170	4170	4060	3850	3780	3650	3550	3400	3200	3100	2950	3000				
Hot Rolled Steel Plate Commercial	3210	3180	3150	3000	2800	2670	2610	2410	2350	2250	2200	2310				
2016																
Material	J	F	M	A	M	J	J	A	S	O	N	D	% Change 1 Month	% Change 3 Month	% Change 6 Month	% Change 12 Month
Tinplate (0.23*800*MR T4)	4520	4520	5000	5500									10.00%	21.68%	7.42%	-9.09%
Cold Roll Steel Sheet (1mm*1250*2500/ST12)	2750	2750	3200	3700									15.63%	34.55%	42.31%	-0.80%
Hot Roll Steel Sheet (3mm*1250*C/Q235)	2160	2370	2610	3060									17.24%	41.67%	53.00%	13.33%
Steel Wire (D6.5-10/Q235)	2160	2370	2610	3060									17.24%	41.67%	54.55%	27.50%
Cold Roll Steel Tube (22*1.5)	2240	2230	2580	3330									29.07%	48.66%	29.07%	-12.37%
Hot Roll Steel Tube (22*1.5)	2800	2750	3050	3500									14.75%	25.00%	25.00%	-7.89%
Pig Iron	1550	1450	1450	1450									0.00%	-6.45%	-19.44%	-30.95%
Steel Plate Cold Rolled Commercial	2850	2880	2880	3700									12.80%	29.82%	19.35%	-3.90%
Hot Rolled Steel Plate Commercial	2390	2440	2820	3320									17.73%	38.91%	47.56%	10.67%

Data from: <http://www.chinaccm.com/>

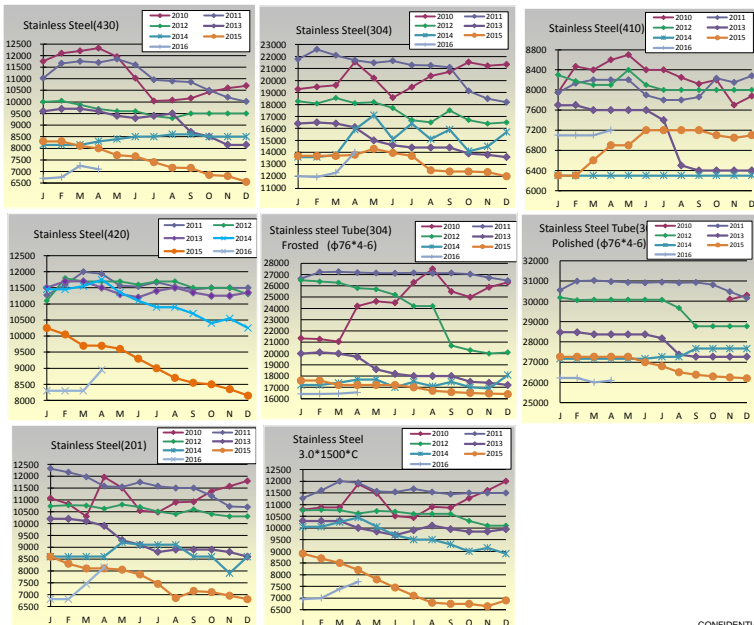


CONFIDENTIAL
© Source Int'l, LP, 2016. All Rights Reserved

Raw Material Report (¥/T)

2010																	
Material	J	F	M	A	M	J	J	A	S	O	N	D					
Stainless Steel (430)	11750	12100	12200	12320	11950	11025	10040	10075	10160	10433	10600	10700					
Stainless Steel (304)	19275	19467	19600	21550	20200	18575	19440	20375	20740	21533	21225	21340					
Stainless Steel (410)	7950	8467	8400	8600	8700	8400	8400	8250	8120	8200	7700	7880					
Stainless Steel Tube (304) FroSted (φ76*4-6)	21350	21267	21050	24200	24625	24500	26300	27500	25500	25000	25875	26308					
Stainless Steel Tube (304) PolShed (φ76*4-6)											30100	30300					
Stainless Steel (201)	11075	10833	10300	11960	11500	10550	10480	10900	10920	11367	11575	11800					
Stainless Steel 3.0*1500°C	10784	10883	10882	11880	11483	10515	10444	10900	10864	11269	11602	12000					
2011																	
Material	J	F	M	A	M	J	J	A	S	O	N	D					
Stainless Steel (430)	11025	11667	11750	11700	11850	11600	10960	10900	10860	10500	10200	10020					
Stainless Steel (304)	21775	22600	22100	21700	21475	21650	21280	21250	21100	19133	18475	18180					
Stainless Steel (410)	7950	8133	8200	8200	8200	7900	7800	7800	7860	8233	8150	8280					
Stainless Steel Tube (304) FroSted (φ76*4-6)	26640	27223	27250	27170	27130	27115	27148	27115	27136	27033	26725	26460					
Stainless Steel Tube (304) PolShed (φ76*4-6)	30553	30990	31025	30970	30927	30914	30940	30913	30930	30817	30475	30160					
Stainless Steel (201)	12325	12167	11975	11580	11550	11750	11580	11500	11500	11167	10725	10700					
Stainless Steel 3.0*1500°C	11936	11566	11541	11673	11535	11445	11500	11500	11500	11100	10725	10680					
Stainless Steel (420)	11269	11602	12000	11936	11566	11541	11673	11535	11445	11500	11500	11500					
2012																	
Material	J	F	M	A	M	J	J	A	S	O	N	D					
Stainless Steel (430)	10000	10050	9880	9700	9600	9600	9400	9300	9500	9500	9500	9500					
Stainless Steel (304)	18267	18075	18540	18100	18200	17700	16700	16500	17500	16700	16400	16500					
Stainless Steel (410)	8300	8175	8100	8100	8400	8100	8000	8000	8000	8000	8000	8000					
Stainless Steel Tube (304) FroSted (φ76*4-6)	26500	26375	26280	25800	25700	25200	24200	24200	20700	20300	20000	20100					
Stainless Steel Tube (304) PolShed (φ76*4-6)	30180	30055	30080	30080	30080	30080	30070	29670	28770	28770	28770	28770					
Stainless Steel (201)	10733	10775	10760	10625	10800	10700	10500	10400	10600	10400	10300	10300					
Stainless Steel 3.0*1500°C	10760	10775	10760	10625	10725	10700	10600	10600	10600	10300	10100	10100					
Stainless Steel (420)	11100	11800	11700	11700	11700	11600	11700	11700	11500	11500	11500	11300					
2013																	
Material	J	F	M	A	M	J	J	A	S	O	N	D					
Stainless Steel (430)	9600	9700	9700	9600	9400	9300	9400	9500	8700	8500	8150	8150					
Stainless Steel (304)	16400	16500	16400	16100	15000	14600	14400	14400	14400	13900	13800	13600					
Stainless Steel (410)	7700	7700	7600	7600	7600	7400	6500	6400	6400	6400	6400	6400					
Stainless Steel Tube (304) FroSted (φ76*4-6)	20000	20100	20000	19700	18600	18200	18000	18000	18000	17500	17400	17200					
Stainless Steel Tube (304) PolShed (φ76*4-6)	28470	28470	28370	28370	28370	28370	28170	27370	27270	27270	27270	27270					
Stainless Steel (201)	10200	10200	10100	9900	9300	9100	8800	8900	8900	8900	8800	8600					
Stainless Steel 3.0*1500°C	10300	10300	10300	10000	9850	9700	9900	10100	9950	9850	9850	9950					
Stainless Steel (420)	11500	11700	11700	11500	11300	11200	11400	11500	11350	11250	11250	11350					
2014																	
Material	J	F	M	A	M	J	J	A	S	O	N	D					
Stainless Steel (430)	8150	8150	8150	8300	8400	8500	8500	8600	8600	8500	8500	8500					
Stainless Steel (304)	13600	13600	13800	15900	17100	15100	16400	15100	15900	14100	14500	15700					
Stainless Steel (410)	6300	6300	6300	6300	6300	6300	6300	6300	6300	6300	6300	6300					
Stainless Steel Tube (304) FroSted (φ76*4-6)	17200	17200	17400	17700	17700	17000	17500	17100	17500	17000	16900	18100					
Stainless Steel Tube (304) PolShed (φ76*4-6)	27170	27170	27170	27170	27170	27170	27270	27270	27670	27670	27670	27670					
Stainless Steel (201)	8600	8600	8600	8600	9200	9100	9100	9100	8600	8600	7900	8600					
Stainless Steel 3.0*1500°C	10050	10050	10250	10450	10050	9700	9500	9500	9300	9000	9150	8900					
Stainless Steel (420)	11450	11450	11550	11750	11350	11100	10900	10900	10700	10400	10550	10250					
2015																	
Material	J	F	M	A	M	J	J	A	S	O	N	D					
Stainless Steel (430)	8300	8300	8100	8000	7700	7650	7400	7160	7150	6850	6800	6550					
Stainless Steel (304)	13700	13700	13700	13800	14300	13950	13700	12500	12400	12400	12350	12000					
Stainless Steel (410)	6300	6300	6600	6900	6900	7200	7200	7200	7200	7100	7050	7100					
Stainless Steel Tube (304) FroSted (φ76*4-6)	17600	17600	17200	17200	17200	17200	17000	16700	16580	16500	16450	16400					
Stainless Steel Tube (304) PolShed (φ76*4-6)	27270	27270	27270	27270	27270	27000	26800	26500	26380	26300	26250	26200					
Stainless Steel (201)	8600	8300	8100	8100	8050	7850	7450	6850	7150	7100	6950	6800					
Stainless Steel 3.0*1500°C	8900	8700	8500	8200	7800	7450	7100	6800	6750	6750	6650	6900					
Stainless Steel (420)	10250	10050	9700	9700	9600	9300	9000	8700	8550	8500	8350	8150					
2016																	
Material	J	F	M	A	M	J	J	A	S	O	N	D	% Change 1 Month	% Change 3 Month	% Change 6 Month	% Change 12 Month	
Stainless Steel (430)	6700	6750	7250	7100										-2.07%	5.97%	3.65%	-11.25%
Stainless Steel (304)	12000	11950	12300	14000										13.82%	16.67%	12.90%	1.45%
Stainless Steel (410)	7100	7100	7100	7200										1.41%	1.41%	1.41%	4.35%
Stainless Steel Tube (304) FroSted (φ76*4-6)	16420	16420	16450	16550										0.61%	0.79%	0.30%	-3.78%
Stainless Steel Tube (304) PolShed (φ76*4-6)	26220	26220	26000	26100										0.38%	-0.46%	-0.76%	-4.29%
Stainless Steel (201)	6800	6800	7450	8150										9.40%	19.85%	14.79%	0.62%
Stainless Steel 3.0*1500°C	6950	7000	7400	7700										4.05%	10.79%	14.07%	-6.10%
Stainless Steel (420)	8300	8300	8300	8950										7.83%	7.83%	5.29%	-7.73%

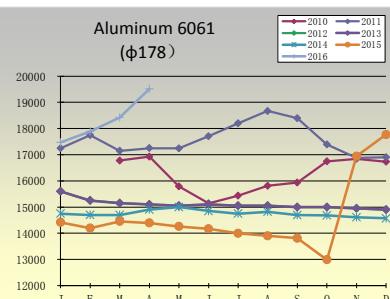
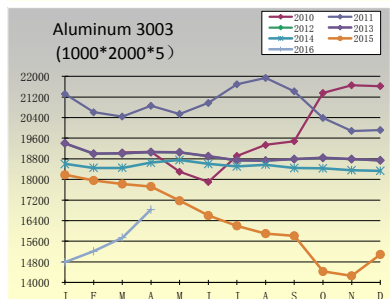
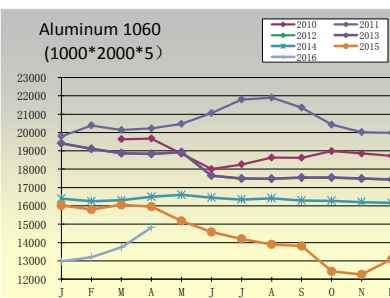
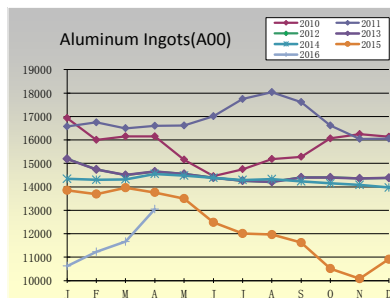
Data from: <http://www.chinaccm.com/>



Raw Material Report (¥/T)

2010																	
Material	J	F	M	A	M	J	J	A	S	O	N	D					
Aluminum Ingots (A00)	16933	16002	16154	16155	15160	14456	14752	15185	15282	16067	16251	16139					
Aluminum 1060 (1000*2000*5)			19635	19672	18838	18000	18260	18628	18626	18983	18855	18722					
Aluminum 3003 (1000*2000*5)			19045	19072	18300	17900	18910	19338	19486	21350	21653	21620					
Aluminum 6061 (φ178)			16775	16926	15788	15140	15432	15813	15933	16747	16844	16729					
2011																	
Material	J	F	M	A	M	J	J	A	S	O	N	D					
Aluminum Ingots (A00)	16575	16747	16500	16604	16618	17014	17744	18039	17612	16617	16044	16059					
Aluminum 1060 (1000*2000*5)	19795	20390	20140	20223	20474	21058	21800	21903	21355	20427	20023	19982					
Aluminum 3003 (1000*2000*5)	21313	20605	20441	20857	20536	20965	21690	21935	21417	20383	19883	19914					
Aluminum 6061 (φ178)	17246	17750	17150	17250	17243	17704	18201	18669	18391	17390	16873	16904					
2012																	
Material	J	F	M	A	M	J	J	A	S	O	N	D					
Aluminum Ingots (A00)	16037	15906	15950	15850	15975	15650	15610	15530	15650	15300	15320	15270					
Aluminum 1060 (1000*2000*5)	19930	19740	19796	19873	20000	19430	19400	19350	19480	19450	18030	19470					
Aluminum 3003 (1000*2000*5)	19800	19663	19738	19800	19870	19380	19500	19450	19580	19540	19650	19550					
Aluminum 6061 (φ178)	16967	16688	16720	16725	16650	16400	16000	15900	15900	15850	15700	15700					
2013																	
Material	J	F	M	A	M	J	J	A	S	O	N	D					
Aluminum Ingots (A00)	15190	14740	14500	14650	14550	14390	14260	14210	14400	14400	14360	14380					
Aluminum 1060 (1000*2000*5)	19410	19110	18870	18830	18930	17650	17490	17480	17540	17540	17490	17440					
Aluminum 3003 (1000*2000*5)	19400	19000	19010	19060	19050	18900	18740	18730	18790	18840	18790	18740					
Aluminum 6061 (φ178)	15600	15250	15150	15100	15050	15100	15050	15050	15000	15000	14950	14900					
2014																	
Material	J	F	M	A	M	J	J	A	S	O	N	D					
Aluminum Ingots (A00)	14340	14300	14320	14550	14480	14390	14290	14330	14230	14150	14080	13970					
Aluminum 1060 (1000*2000*5)	16400	16250	16300	16500	16600	16450	16350	16420	16290	16280	16210	16170					
Aluminum 3003 (1000*2000*5)	18600	18450	18450	18650	18750	18600	18500	18570	18440	18430	18360	18330					
Aluminum 6061 (φ178)	14750	14700	14700	14900	15000	14850	14750	14820	14690	14680	14610	14570					
2015																	
Material	J	F	M	A	M	J	J	A	S	O	N	D					
Aluminum Ingots (A00)	13850	13690	13960	13760	13500	12480	12010	11960	11620	10510	10080	10910					
Aluminum 1060 (1000*2000*5)	16020	15800	16055	15955	15175	14580	14200	13900	13810	12430	12260	13090					
Aluminum 3003 (1000*2000*5)	18180	17960	17825	17725	17175	16600	16200	15900	15810	14430	14260	15090					
Aluminum 6061 (φ178)	14420	14200	14455	14395	14260	14170	14000	13900	13810	12990	16940	17770					
2016																	
Material	J	F	M	A	M	J	J	A	S	O	N	D	% Change 1 Month	% Change 3 Month	% Change 6 Month	% Change 12 Month	
Aluminum Ingots (A00)	10620	11230	11660	13050										11.92%	22.88%	24.17%	-5.16%
Aluminum 1060 (1000*2000*5)	12970	13210	13740	14830										7.93%	14.34%	19.31%	-7.05%
Aluminum 3003 (1000*2000*5)	14790	15210	15740	16830										6.93%	13.79%	16.63%	-5.05%
Aluminum 6061 (φ178)	17470	17890	18420	19510										5.92%	11.68%	50.19%	35.53%

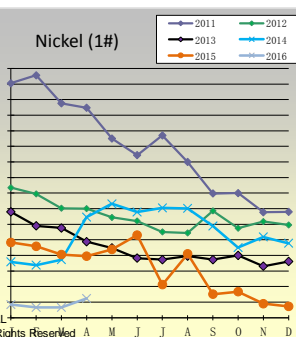
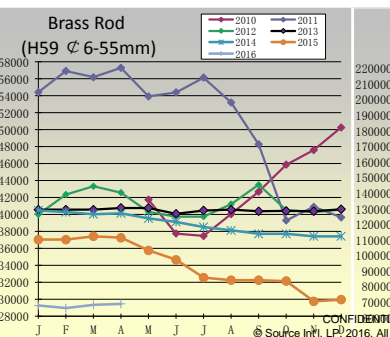
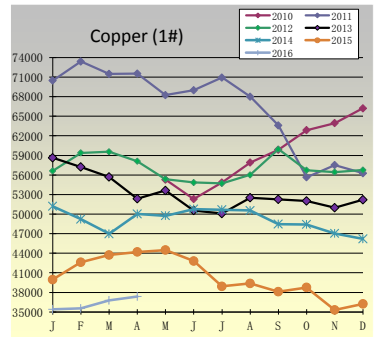
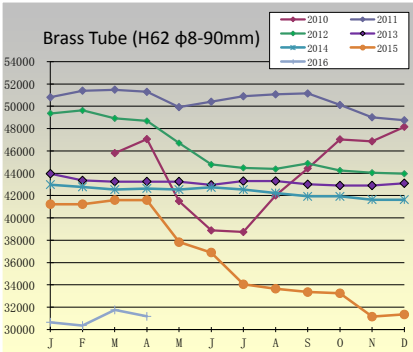
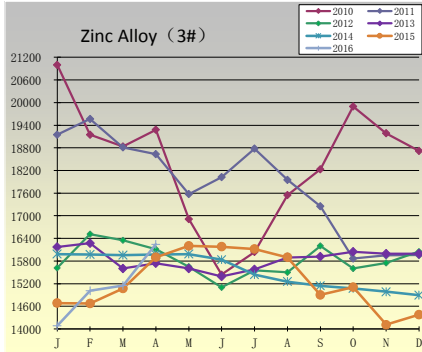
Data from: <http://www.chinacm.com/>



Raw Material Report (¥/T)

2010																	
Material	J	F	M	A	M	J	J	A	S	O	N	D					
Zinc Alloy (3#)	21000	19150	18838	19280	16913	15438	16040	17550	18230	19900	19188	18720					
Brass Tube (H62 φ8-90mm)			45800	47050	41500	38875	38730	42000	44430	47033	46860	48159					
Copper (1#)					55296	52317	54834	57896	59874	62864	63949	66217					
Brass Rod (H59 φ6-55mm)					41741	37753	37461	40040	42685	45872	47599	50264					
2011																	
Material	J	F	M	A	M	J	J	A	S	O	N	D					
Zinc Alloy (3#)	19150	19567	18813	18635	17575	18025	18780	17950	17250	15867	15950	15960					
Brass Tube (H62 φ8-90mm)	50800	51390	51485	51288	49923	50410	50900	51060	51148	50113	49005	48740					
Copper (1#)	70481	73380	71500	71538	68239	68995	70935	67989	63599	55653	57510	56266					
Brass Rod (H59 φ6-55mm)	54419	56917	56184	57294	53928	54403	56137	53206	48280	39300	40894	39653					
Nickel (1#)	210500	215600	197620	194750	175000	164375	177000	160000	139750	140000	127700	128000					
2012																	
Material	J	F	M	A	M	J	J	A	S	O	N	D					
Zinc Alloy (3#)	15617	16513	16350	16113	15650	15100	15550	15500	16200	15600	15750	16050					
Brass Tube (H62 φ8-90mm)	49363	49630	48910	48680	46700	44780	44480	44380	44880	44250	44050	43950					
Copper (1#)	56614	59383	59560	58101	55370	54840	54690	56010	59940	56730	56445	56750					
Brass Rod (H59 φ6-55mm)	40000	42355	43330	42586	40300	39750	39750	41230	43500	40550	40285	40575					
Nickel (1#)	143500	139500	130300	130000	124400	122100	115100	114500	128600	117500	121700	119600					
2013																	
Material	J	F	M	A	M	J	J	A	S	O	N	D					
Zinc Alloy (3#)	16170	16270	15600	15740	15600	15390	15575	15895	15915	16045	15995	15995					
Brass Tube (H62 φ8-90mm)	43950	43350	43250	43250	42950	43300	43300	43000	42900	42900	42900	43100					
Copper (1#)	58620	57220	55690	52360	53620	50540	50080	52500	52260	52010	50970	52195					
Brass Rod (H59 φ6-55mm)	40575	40575	40575	40775	40775	40075	40475	40575	40375	40415	40375	40625					
Nickel (1#)	128000	119000	117600	108800	104800	98250	97300	99550	97300	100000	93100	96100					
2014																	
Material	J	F	M	A	M	J	J	A	S	O	N	D					
Zinc Alloy (3#)	15985	15975	15955	15975	15985	15835	15435	15255	15145	15075	14985	14895					
Brass Tube (H62 φ8-90mm)	42980	42780	42530	42630	42530	42730	42530	42230	41930	41930	41630	41630					
Copper (1#)	51210	49220	46985	50035	49745	50770	50680	50555	48475	48425	47045	46215					
Brass Rod (H59 φ6-55mm)	40475	40275	40025	40125	39525	39125	38525	38125	37725	37725	37425	37425					
Nickel (1#)	95900	93800	97300	124600	133100	127850	130550	130200	118900	105000	111900	107800					
2015																	
Material	J	F	M	A	M	J	J	A	S	O	N	D					
Zinc Alloy (3#)	14685	14675	15075	15900	16200	16180	16120	15900	14900	15110	14110	14380					
Brass Tube (H62 φ8-90mm)	41230	41230	41600	41600	37825	36900	34050	33650	33350	33250	31150	31350					
Copper (1#)	39950	42615	43740	44200	44490	42800	38920	39380	38100	38760	35310	36240					
Brass Rod (H59 φ6-55mm)	37025	37025	37425	37250	35750	34650	32550	32250	32250	32150	29750	29950					
Nickel (1#)	108300	105900	100600	99500	103900	113000	81300	101000	75100	76700	69000	67300					
2016																	
Material	J	F	M	A	M	J	J	A	S	O	N	D	% Change 1 Month	% Change 3 Month	% Change 6 Month	% Change 12 Month	
Zinc Alloy (3#)	14080	15010	15150	16240										7.19%	15.34%	7.48%	2.14%
Brass Tube (H62 φ8-90mm)	30650	30350	31750	31170										-1.83%	1.70%	-6.26%	-25.07%
Copper (1#)	35410	35540	36770	37360										1.60%	5.51%	-3.61%	-15.48%
Brass Rod (H59 φ6-55mm)	29250	28950	29350	29450										0.34%	0.68%	-8.40%	-20.94%
Nickel (1#)	68400	66650	66650	72400										8.63%	5.85%	-5.61%	-27.24%

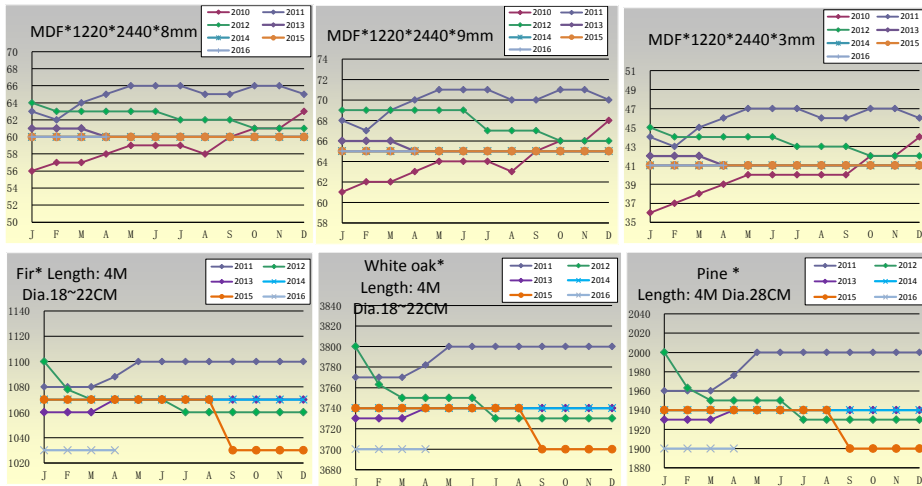
Data from: <http://www.chinacm.com/>



Raw Material Report (¥/T)/(¥/M3)

2010																
Material	J	F	M	A	M	J	J	A	S	O	N	D				
MDF*1220*2440*8mm	56	57	57	58	59	59	59	58	60	61	61	63				
MDF*1220*2440*9mm	61	62	62	63	64	64	64	63	65	66	66	68				
MDF*1220*2440*3mm	36	37	38	39	40	40	40	40	40	42	42	44				
2011																
Material	J	F	M	A	M	J	J	A	S	O	N	D				
MDF*1220*2440*8mm	63	62	64	65	66	66	66	65	65	66	66	65				
MDF*1220*2440*9mm	68	67	69	70	71	71	71	70	70	71	71	70				
MDF*1220*2440*3mm	44	43	45	46	47	47	47	46	46	47	47	46				
Fir* Length: 4M Dia.18~22CM	1080	1080	1080	1088	1100	1100	1100	1100	1100	1100	1100	1100				
White oak* Length: 4M Dia.18~22CM	3770	3770	3770	3782	3800	3800	3800	3800	3800	3800	3800	3800				
Pine * Length: 4M Dia.28CM	1960	1960	1960	1976	2000	2000	2000	2000	2000	2000	2000	2000				
2012																
Material	J	F	M	A	M	J	J	A	S	O	N	D				
MDF*1220*2440*8mm	64	63	63	63	63	63	62	62	62	61	61	61				
MDF*1220*2440*9mm	69	69	69	69	69	69	67	67	67	66	66	66				
MDF*1220*2440*3mm	45	44	44	44	44	44	43	43	43	42	42	42				
Fir* Length: 4M Dia.18~22CM	1100	1078	1070	1070	1070	1070	1060	1060	1060	1060	1060	1060				
White Oak* Length: 4M Dia.18~22CM	3800	3763	3750	3750	3750	3750	3730	3730	3730	3730	3730	3730				
Pine * Length: 4M Dia.28CM	2000	1963	1950	1950	1950	1950	1930	1930	1930	1930	1930	1930				
2013																
Material	J	F	M	A	M	J	J	A	S	O	N	D				
MDF*1220*2440*8mm	61	61	61	60	60	60	60	60	60	60	60	60				
MDF*1220*2440*9mm	66	66	66	65	65	65	65	65	65	65	65	65				
MDF*1220*2440*3mm	42	42	42	41	41	41	41	41	41	41	41	41				
Fir* Length: 4M Dia.18~22CM	1060	1060	1060	1070	1070	1070	1070	1070	1070	1070	1070	1070				
White Oak* Length: 4M Dia.18~22CM	3730	3730	3730	3740	3740	3740	3740	3740	3740	3740	3740	3740				
Pine * Length: 4M Dia.28CM	1930	1930	1930	1940	1940	1940	1940	1940	1940	1940	1940	1940				
2014																
Material	J	F	M	A	M	J	J	A	S	O	N	D				
MDF*1220*2440*8mm	60	60	60	60	60	60	60	60	60	60	60	60				
MDF*1220*2440*9mm	65	65	65	65	65	65	65	65	65	65	65	65				
MDF*1220*2440*3mm	41	41	41	41	41	41	41	41	41	41	41	41				
Fir* Length: 4M Dia.18~22CM	1070	1070	1070	1070	1070	1070	1070	1070	1070	1070	1070	1070				
White Oak* Length: 4M Dia.18~22CM	3740	3740	3740	3740	3740	3740	3740	3740	3740	3740	3740	3740				
Pine * Length: 3.9M Dia.28CM	1940	1940	1940	1940	1940	1940	1940	1940	1940	1940	1940	1940				
2015																
Material	J	F	M	A	M	J	J	A	S	O	N	D				
MDF*1220*2440*8mm	60	60	60	60	60	60	60	60	60	60	60	60				
MDF*1220*2440*9mm	65	65	65	65	65	65	65	65	65	65	65	65				
MDF*1220*2440*3mm	41	41	41	41	41	41	41	41	41	41	41	41				
Fir* Length: 4M Dia.18~22CM	1070	1070	1070	1070	1070	1070	1070	1070	1030	1030	1030	1030				
White Oak* Length: 4M Dia.18~22CM	3740	3740	3740	3740	3740	3740	3740	3740	3700	3700	3700	3700				
Pine * Length: 3.9M Dia.28CM	1940	1940	1940	1940	1940	1940	1940	1940	1900	1900	1900	1900				
2016																
Material	J	F	M	A	M	J	J	A	S	O	N	D	% Change 1 Month	% Change 3 Month	% Change 6 Month	% Change 12 Month
MDF*1220*2440*8mm	60	60	60	60	60	60	60	60	60	60	60	60	0.00%	0.00%	0.00%	0.00%
MDF*1220*2440*9mm	65	65	65	65	65	65	65	65	65	65	65	65	0.00%	0.00%	0.00%	0.00%
MDF*1220*2440*3mm	41	41	41	41	41	41	41	41	41	41	41	41	0.00%	0.00%	0.00%	0.00%
Fir* Length: 4M Dia.18~22CM	1030	1030	1030	1030	1030	1030	1030	1030	1030	1030	1030	1030	0.00%	0.00%	0.00%	-3.74%
White Oak* Length: 4M Dia.18~22CM	3700	3700	3700	3700	3700	3700	3700	3700	3700	3700	3700	3700	0.00%	0.00%	0.00%	-1.07%
Pine * Length: 3.9M Dia.28CM	1900	1900	1900	1900	1900	1900	1900	1900	1900	1900	1900	1900	0.00%	0.00%	0.00%	-2.06%

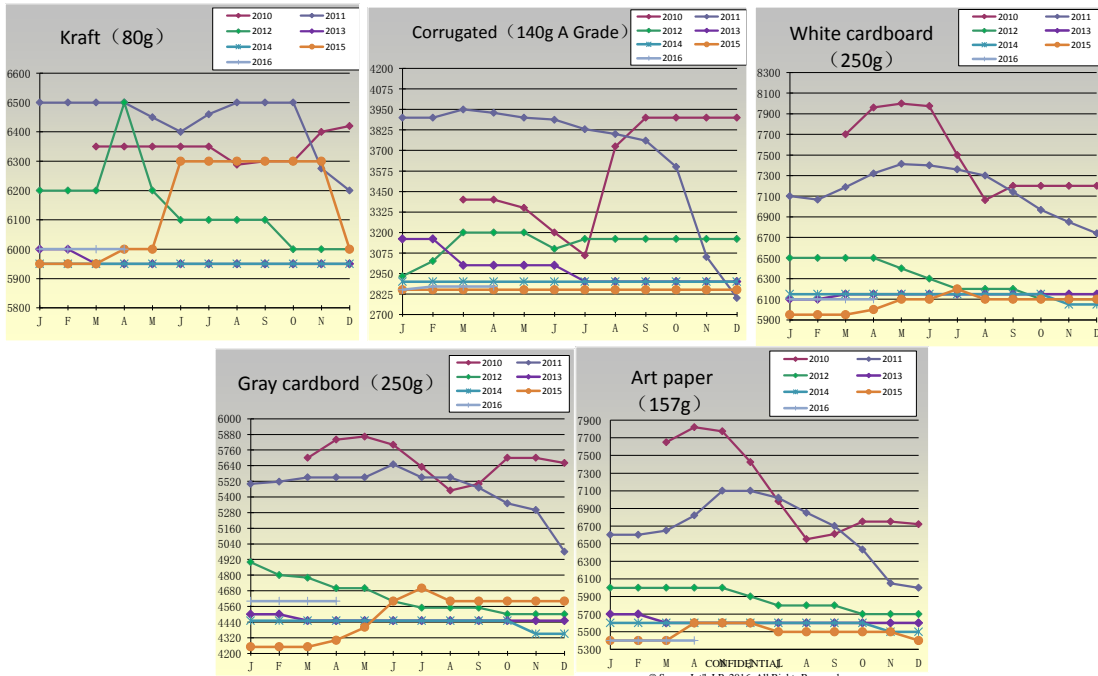
Data from: <http://www.chinacm.com/>



Raw Material Report (¥/T)

2010																
Material	J	F	M	A	M	J	J	A	S	O	N	D				
Kraft (80g)			6350	6350	6350	6350	6350	6288	6300	6300	6400	6420				
Corrugated (140g A Grade)			3400	3400	3350	3200	3060	3725	3900	3900	3900	3900				
White Cardboard (250g)			7700	7960	8000	7975	7500	7063	7200	7200	7200	7200				
Gray Cardbord (250g)			5700	5840	5863	5800	5630	5450	5500	5700	5700	5660				
Art Paper (157g)			7650	7820	7775	7425	6980	6550	6610	6750	6750	6720				
2011																
Material	J	F	M	A	M	J	J	A	S	O	N	D				
Kraft (80g)	6500	6500	6500	6500	6450	6400	6460	6500	6500	6500	6275	6200				
Corrugated (140g A Grade)	3900	3900	3950	3930	3900	3888	3830	3800	3760	3600	3050	2800				
White Cardboard (250g)	7100	7067	7188	7320	7413	7400	7360	7300	7140	6967	6850	6740				
Gray Cardbord (250g)	5500	5517	5550	5550	5550	5650	5550	5550	5470	5350	5300	4980				
Art Paper (157g)	6600	6600	6650	6820	7100	7100	7020	6850	6700	6433	6050	6000				
2012																
Material	J	F	M	A	M	J	J	A	S	O	N	D				
Kraft (80g)	6200	6200	6200	6500	6200	6100	6100	6100	6100	6000	6000	6000				
Corrugated (140g A Grade)	2933	3025	3200	3200	3200	3100	3160	3160	3160	3160	3160	3160				
White Cardboard (250g)	6500	6500	6500	6500	6400	6300	6200	6200	6200	6100	6100	6100				
Gray Cardbord (250g)	4900	4800	4780	4700	4700	4600	4550	4550	4550	4500	4500	4500				
Art Paper (157g)	6000	6000	6000	6000	6000	5900	5800	5800	5800	5700	5700	5700				
2013																
Material	J	F	M	A	M	J	J	A	S	O	N	D				
Kraft (80g)	6000	6000	5950	5950	5950	5950	5950	5950	5950	5950	5950	5950				
Corrugated (140g A Grade)	3160	3160	3000	3000	3000	3000	2900	2900	2900	2900	2900	2900				
White Cardboard (250g)	6100	6100	6150	6150	6150	6150	6150	6150	6150	6150	6150	6150				
Gray Cardbord (250g)	4500	4500	4450	4450	4450	4450	4450	4450	4450	4450	4450	4450				
Art Paper (157g)	5700	5700	5600	5600	5600	5600	5600	5600	5600	5600	5600	5600				
2014																
Material	J	F	M	A	M	J	J	A	S	O	N	D				
Kraft (80g)	5950	5950	5950	5950	5950	5950	5950	5950	5950	5950	5950	5950				
Corrugated (140g A Grade)	2900	2900	2900	2900	2900	2900	2900	2900	2900	2900	2900	2900				
White Cardboard (250g)	6150	6150	6150	6150	6150	6150	6150	6150	6150	6150	6050	6050				
Gray Cardbord (250g)	4450	4450	4450	4450	4450	4450	4450	4450	4450	4450	4350	4350				
Art Paper (157g)	5600	5600	5600	5600	5600	5600	5600	5600	5600	5600	5500	5500				
2015																
Material	J	F	M	A	M	J	J	A	S	O	N	D				
Kraft (80g)	5950	5950	5950	6000	6000	6300	6300	6300	6300	6300	6300	6000				
Corrugated (140g A Grade)	2850	2850	2850	2850	2850	2850	2850	2850	2850	2850	2850	2850				
White Cardboard (250g)	5950	5950	5950	6000	6100	6100	6200	6100	6100	6100	6100	6100				
Gray Cardbord (250g)	4250	4250	4250	4300	4400	4600	4700	4600	4600	4600	4600	4600				
Art Paper (157g)	5400	5400	5400	5600	5600	5500	5500	5500	5500	5500	5500	5400				
2016																
Material	J	F	M	A	M	J	J	A	S	O	N	D	% Change 1 Month	% Change 3 Month	% Change 6 Month	% Change 12 Month
Kraft (80g)	6000	6000	6000	6000									0.00%	0.00%	-4.76%	0.00%
Corrugated (140g A Grade)	2850	2870	2870	2870									0.00%	0.70%	0.70%	0.70%
White Cardboard (250g)	6100	6100	6100	6100									0.00%	0.00%	0.00%	1.67%
Gray Cardbord (250g)	4600	4600	4600	4600									0.00%	0.00%	0.00%	6.98%
Art Paper (157g)	5400	5400	5400	5400									0.00%	0.00%	-1.82%	-3.57%

Data from: <http://www.chinaccm.com/>



Raw Material Report (¥)

2010												
Material	J	F	M	A	M	J	J	A	S	O	N	D
Cotton (129)		15638	16410	17338	18482	19009	18819	20040	26260	29939	28372	
100% Polyester Fabric		13700	14720	15050	15300	16980	17700	16940	18233	21550	18300	
Polyester (Fuzhou)	11700	12400	12700	12500	13700	13600	13600	13100	13009	13393	14133	14263
100% Cotton Fabric	16800	16800	17100	18600	21200	21150	21750	21250	21150	21550	29500	29500
50% Cotton 50% Polyester	19300	18600	20100	23600	24250	27750	28600	26750	25750	32750	34000	
T/C Fabric	21	21	21	22	22	23	25	25	25	25	25	26
Non-woven PP Fabric	10	10	10	11	11	11	11	11	11	11	11	11
Transparent PVC Fabric	7200	7200	7200	7250	7250	7500	7700	7950	8050	8200	8400	8550
Frosted PVC Fabric	8000	8000	8000	8085	8085	8300	8500	8800	8950	9100	9300	9450
PU Leather 0.7mm	32	32	32	33	33	33	32	32	32	32	32	31
PVC Leather 0.7mm	10	10	10	11	11	11	11	11	11	11	11	11
Real Leather 1.6	260	260	260	280	280	300	300	300	300	300	310	310

2011												
Material	J	F	M	A	M	J	J	A	S	O	N	D
Cotton (129)	29283	31407	32694	31103	28123	27755	25441	21858	21975	21958	21750	21434
100% Polyester Fabric	18125	19500	19550	18440	16300	16275	16380	16875	17480	16167	14275	13960
Polyester (Fuzhou)	16798	17377	15948	15988	15588	14267	14244	14729	15000	14900	14100	14300
100% Cotton Fabric	29500	29500	18750	20250	21150	21750	21000	21800	20200	19800	19800	
50% Cotton 50% Polyester	34250	34250	34250	34250	34250	34250	34250	34250	34250	34230	34230	34360
T/C Fabric	26	27	27	29	31	33	34	34	37	38	38	35
Non-woven PP Fabric	11	11	11	11	11	11	13	13	14	14	13	13
Transparent PVC Fabric	8650	8900	9150	9300	9500	9700	9800	9800	10000	11000	11100	11100
Frosted PVC Fabric	9550	9800	11000	11100	11300	11500	11700	11700	12000	12000	12120	12120
PU Leather 0.7mm	31	30	30	29	29	29	29	29	30	30	27	26
PVC Leather 0.7mm	11	11	11	11	11	11	11	11	11	11	11	11
Real Leather 1.6	310	320	320	330	335	350	350	350	360	360	400	392

2012												
Material	J	F	M	A	M	J	J	A	S	O	N	D
Cotton (129)	21523	21724	21787	21616	20596	19578	19603	19655	19725	19750	19920	20432
100% Polyester Fabric	14533	14950	14233	13550	12800	12000	12500	13500	13700	12700	12400	13100
Polyester (Fuzhou)	14300	14300	14350	14300	14150	14000	14150	14000	14000	13950	13750	13750
100% Cotton Fabric	19800	20000	24500	24500	21500	21300	21100	21100	21000	20800	20800	20800
50% Cotton 50% Polyester	34080	34200	34250	34250	34250	34100	34100	34000	34000	33950	33850	33850
T/C Fabric	35	30	30	30	33	32	32	31	31	30	30	30
Non-woven PP Fabric	13	13	14	14	14	12	12	12	12	10	10	10
Transparent PVC Fabric	11500	12250	12300	12300	12300	12100	12100	11950	11950	11900	11900	11900
Frosted PVC Fabric	12100	12200	12200	12200	12200	12000	12000	10750	10750	10700	10700	10700
PU Leather 0.7mm	37	37	37	37	37	38	38	36	36	34	34	36
PVC Leather 0.7mm	13	11	11	11	11	13	13	11	11	10	10	12
Real Leather 1.6	400	379	380	380	385	385	385	383	383	380	380	385

2013												
Material	J	F	M	A	M	J	J	A	S	O	N	D
Cotton (129)	20500	20500	20500	20500	20500	20494	20487	20484	20318	21050	21042	20858
100% Polyester Fabric	13600	13500	12400	12700	12400	12400	12400	12550	12200	11800	11600	11500
Polyester (Fuzhou)	13750	13850	13850	13850	13850	13850	13850	13850	13850	13850	13850	13850
100% Cotton Fabric	20800	20900	20900	20900	20900	20900	20900	20900	20900	20900	20900	20900
50% Cotton 50% Polyester	33950	33950	33950	33950	33950	33950	33950	33950	33950	33950	33950	33950
T/C Fabric	30	32	32	32	32	32	32	32	32	32	32	32
Non-woven PP Fabric	10	12	12	12	12	12	12	12	12	12	11.5	12
Transparent PVC Fabric	11900	12050	12050	12050	12050	12050	12050	12050	12050	12050	12050	12050
Frosted PVC Fabric	10700	10750	10750	10750	10750	10750	10750	10750	10750	10750	10750	10750
PU Leather 0.7mm	36	39	39	39	39	39	39	39	39	39	39	39
PVC Leather 0.7mm	12	15	15	15	15	15	15	15	15	15	15	15
Real Leather 1.6	385	395	395	395	395	395	395	395	395	395	395	395

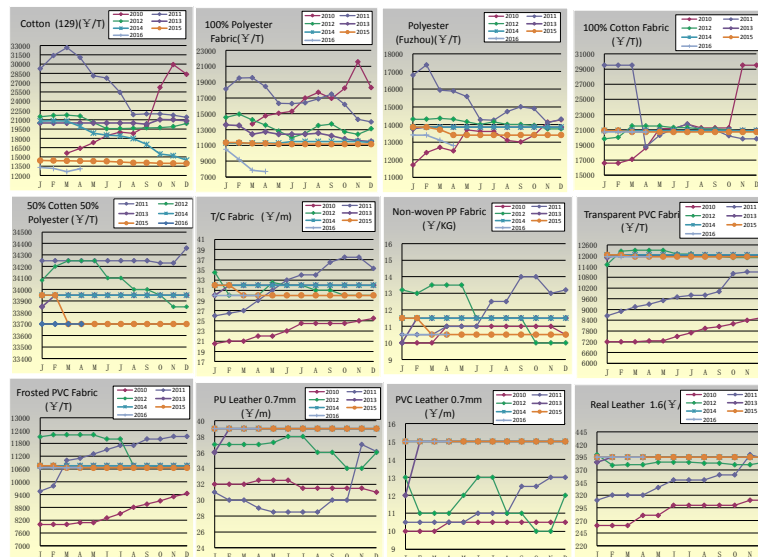
2014												
Material	J	F	M	A	M	J	J	A	S	O	N	D
Cotton (129)	20842	20858	20814	19917	18872	18526	18416	17993	17026	15481	15211	14496
100% Polyester Fabric	11300	11300	11250	11250	11150	11150	11150	11150	11150	11150	11150	11150
Polyester (Fuzhou)	13850	13850	13850	13850	13850	13850	13850	13850	13850	13850	13850	13850
100% Cotton Fabric	20900	20900	20900	20900	20900	20900	20900	20900	20900	20900	20900	20900
50% Cotton 50% Polyester	33950	33950	33950	33950	33950	33950	33950	33950	33950	33950	33950	33950
T/C Fabric	32	32	32	32	32	32	32	32	32	32	32	32
Non-woven PP Fabric	12	12	12	12	12	12	12	12	12	12	11.5	12
Transparent PVC Fabric	12850	12850	12850	12850	12850	12850	12850	12850	12850	12850	12850	12850
Frosted PVC Fabric	10750	10750	10750	10750	10750	10750	10750	10750	10750	10750	10750	10750
PU Leather 0.7mm	39	39	39	39	39	39	39	39	39	39	39	39
PVC Leather 0.7mm	15	15	15	15	15	15	15	15	15	15	15	15
Real Leather 1.6	395	395	395	395	395	395	395	395	395	395	395	395

2015												
Material	J	F	M	A	M	J	J	A	S	O	N	D
Cotton (129)	14439	14428	14395	14363	14337	14320	14179	14071	14071	13990	13982	13966
100% Polyester Fabric	11350	11350	11250	11250	11150	11150	11150	11150	11150	11150	11150	11150
Polyester (Fuzhou)	13850	13850	13700	13400	13400	13400	13400	13400	13400	13400	13400	13400
100% Cotton Fabric	20900	20900	20700	20700	20700	20700	20700	20700	20700	20700	20700	20700
50% Cotton 50% Polyester	33950	33950	33700	33700	33700	33700	33700	33700	33700	33700	33700	33700
T/C Fabric	32	32	30	30	30	30	30	30	30	30	30	30
Non-woven PP Fabric	12	12	11	11	11	11	11	11	11	11	10.5	11
Transparent PVC Fabric	12050	12050	11950	11950	11950	11950	11950	11950	11950	11950	11950	11950
Frosted PVC Fabric	10750	10750	10650	10650	10650	10650	10650	10650	10650	10650	10650	10650
PU Leather 0.7mm	39	39	39	39	39	39	39	39	39	39	39	39
PVC Leather 0.7mm	15	15	15	15	15	15	15	15	15	15	15	15
Real Leather 1.6	395	395	395	395	395	395	395	395	395	395	395	395

2016												
Material	J	F	M	A	M	J	J	A	S	O	N	D
Cotton (129)	13327	13137	12631	13093								
100% Polyester Fabric	10500	9200	7850	7700								
Polyester (Fuzhou)	13400	13400	13100	12800								
100% Cotton Fabric	20700	20700	20700	20700								
50% Cotton 50% Polyester	33700	33700	33700	33700								
T/C Fabric	30	30	30	30								
Non-woven PP Fabric	11	11	11	11								
Transparent PVC Fabric	11950	11950	11950	11950								
Frosted PVC Fabric	10650	10650	10650	10650								
PU Leather 0.7mm	39	39	39	39								
PVC Leather 0.7mm	15	15	15	15								
Real Leather 1.6	395	395	395	395								

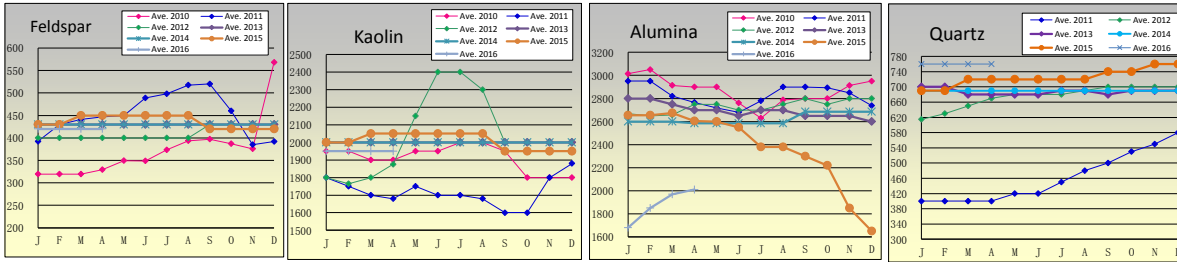
% Change 1 Month	% Change 3 Month	% Change 6 Month	% Change 12 Month
1.66%	-1.76%	-6.41%	-8.84%
-1.91%	-26.67%	-30.94%	-31.56%
-2.29%	-4.48%	-4.48%	-4.48%
0.00%	0.00%	0.00%	0.00%
0.00%	0.00%	0.00%	0.00%
0.00%	0.00%	0.00%	0.00%
0.00%	0.00%	0.00%	0.00%
0.00%	0.00%	0.00%	0.00%
0.00%	0.00%	0.00%	0.00%
0.00%	0.00%	0.00%	0.00%
0.00%	0.00%	0.00%	0.00%
0.00%	0.00%	0.00%	0.00%

Data from: <http://www.chinaccm.com/>



Feldspar (长石) K2O 9% FeO.2% 灵寿 (¥/T)													% Change 1 Month	% Change 3 Month	% Change 6 Month	% Change 12 Month
	J	F	M	A	M	J	J	A	S	O	N	D				
Ave. 2010	320	320	319	329	349	349	374	394	397	387	376	568				
Ave. 2011	392	429	441	447	450	489	498	518	520	460	385	392				
Ave. 2012	400	400	400	400	400	400	400	400	430	430	430	430				
Ave. 2013	430	430	430	430	430	430	430	430	430	430	430	430				
Ave. 2014	430	430	430	430	430	430	430	430	430	430	430	430				
Ave. 2015	430	430	450	450	450	450	450	450	420	420	420	420				
Ave. 2016	420	420	420	420									0.00%	0.00%	0.00%	-6.67%
Kaolin (高岭土) 殷烧高岭土 (¥/T)																
	J	F	M	A	M	J	J	A	S	O	N	D				
Ave. 2010	1950	1950	1900	1900	1950	1950	2000	2000	1950	1800	1800	1800				
Ave. 2011	1800	1750	1700	1680	1750	1700	1700	1680	1600	1600	1800	1880				
Ave. 2012	1800	1765	1800	1875	2150	2400	2400	2300	2000	2000	2000	2000				
Ave. 2013	2000	2000	2000	2000	2000	2000	2000	2000	2000	2000	2000	2000				
Ave. 2014	2000	2000	2000	2000	2000	2000	2000	2000	2000	2000	2000	2000				
Ave. 2015	2000	2000	2050	2050	2050	2050	2050	2050	1950	1950	1950	1950				
Ave. 2016	1950	1950	1950	1950									0.00%	0.00%	0.00%	-4.88%
Alumina (铝)氧化铝价格 矾土(¥/T)																
	J	F	M	A	M	J	J	A	S	O	N	D				
Ave. 2010	3015	3050	2914	2900	2900	2761	2630	2788	2800	2800	2913	2950				
Ave. 2011	2950	2950	2820	2766	2718	2680	2780	2900	2900	2893	2850	2738				
Ave. 2012	2667	2650	2658	2750	2750	2700	2700	2750	2800	2750	2800	2800				
Ave. 2013	2800	2800	2750	2700	2700	2650	2700	2700	2650	2650	2650	2600				
Ave. 2014	2600	2600	2600	2585	2585	2585	2585	2585	2685	2685	2685	2685				
Ave. 2015	2655	2655	2675	2605	2600	2550	2380	2380	2300	2220	1850	1650				
Ave. 2016	1680	1850	1970	2010									2.03%	19.64%	-9.46%	-22.84%
Quartz 石英砂(¥/T)																
	J	F	M	A	M	J	J	A	S	O	N	D				
Ave. 2011	400	400	400	400	420	420	450	480	500	530	550	580				
Ave. 2012	615	630	650	670	680	680	680	690	700	700	700	700				
Ave. 2013	700	700	680	680	680	680	690	690	680	690	690	690				
Ave. 2014	690	690	690	690	690	690	690	690	690	690	690	690				
Ave. 2015	690	690	720	720	720	720	720	720	740	740	760	760				
Ave. 2016	760	760	760	760									0.00%	0.00%	2.70%	5.56%

Data from: <http://www.chinacm.com/>



Labor Rates

2011												
Area	J	F	M	A	M	J	J	A	S	O	N	D
Labor (Guangdong-Shenzhen)	¥1,300	¥1,300	¥1,300	¥1,300	¥1,300	¥1,300	¥1,300	¥1,300	¥1,300	¥1,300	¥1,300	¥1,300
Labor (Shandong)	¥920	¥920	¥1,100	¥1,100	¥1,100	¥1,100	¥1,100	¥1,100	¥1,100	¥1,100	¥1,100	¥1,100
Labor (Tianjin)	¥920	¥920	¥1,160	¥1,160	¥1,160	¥1,160	¥1,160	¥1,160	¥1,160	¥1,160	¥1,160	¥1,160
Labor (Fujian)	¥900	¥900	¥1,100	¥1,100	¥1,100	¥1,100	¥1,100	¥1,100	¥1,100	¥1,100	¥1,100	¥1,100
Labor (Hunan)	¥850	¥850	¥850	¥850	¥850	¥850	¥850	¥1,020	¥1,020	¥1,020	¥1,020	¥1,020
Labor (Thailand)	THB 4,290	THB 4,290	THB 4,290	THB 4,290	THB 4,290	THB 4,290	THB 4,290	THB 4,290	THB 4,290	THB 4,290	THB 4,290	THB 4,290
Labor (Bangladesh)	BDT 3,837.30	BDT 3,837.30	BDT 3,837.30	BDT 3,837.30	BDT 3,837.30	BDT 3,837.30	BDT 3,837.30	BDT 3,837.30	BDT 3,837.30	BDT 3,837.30	BDT 3,837.30	BDT 3,837.30

2012												
Area	J	F	M	A	M	J	J	A	S	O	N	D
Labor (Guangdong-Shenzhen)	¥1,300	¥1,500	¥1,500	¥1,500	¥1,500	¥1,500	¥1,500	¥1,500	¥1,500	¥1,500	¥1,500	¥1,500
Labor (Shandong)	¥1,100	¥1,240	¥1,380	¥1,380	¥1,380	¥1,380	¥1,380	¥1,380	¥1,380	¥1,380	¥1,380	¥1,380
Labor (Tianjin)	¥1,160	¥1,310	¥1,310	¥1,310	¥1,310	¥1,310	¥1,310	¥1,310	¥1,310	¥1,310	¥1,310	¥1,310
Labor (Fujian)	¥1,100	¥1,100	¥1,100	¥1,100	¥1,100	¥1,100	¥1,100	¥1,200	¥1,200	¥1,200	¥1,200	¥1,200
Labor (Hunan)	¥1,020	¥1,020	¥1,020	¥1,020	¥1,020	¥1,020	¥1,160	¥1,160	¥1,160	¥1,160	¥1,160	¥1,160
Labor (Average Above China Area)	¥1,356	¥1,294	¥1,294	¥1,294	¥1,294	¥1,294	¥1,262	¥1,282	¥1,282	¥1,282	¥1,282	¥1,282
Labor (Thailand)	THB 4,290	THB 4,290	THB 4,290	THB 5,080	THB 5,080	THB 5,080	THB 5,080	THB 5,080	THB 5,080	THB 5,080	THB 5,080	THB 5,080
Labor (Bangladesh)	BDT 3,837.30	BDT 3,837.30	BDT 3,837.30	BDT 3,837.30	BDT 3,837.30	BDT 3,837.30	BDT 3,837.30	BDT 3,837.30	BDT 3,837.30	BDT 3,837.30	BDT 3,837.30	BDT 3,837.30

2013												
Area	J	F	M	A	M	J	J	A	S	O	N	D
Labor (Guangdong-Shenzhen)	¥1,600	¥1,600	¥1,600	¥1,600	¥1,600	¥1,600	¥1,600	¥1,600	¥1,600	¥1,600	¥1,600	¥1,600
Labor (Shandong)	¥1,240	¥1,240	¥1,380	¥1,380	¥1,380	¥1,380	¥1,380	¥1,380	¥1,380	¥1,380	¥1,380	¥1,380
Labor (Tianjin)	¥1,310	¥1,310	¥1,310	¥1,500	¥1,500	¥1,500	¥1,500	¥1,500	¥1,500	¥1,500	¥1,500	¥1,500
Labor (Fujian)	¥1,200	¥1,200	¥1,200	¥1,200	¥1,200	¥1,200	¥1,200	¥1,200	¥1,200	¥1,200	¥1,200	¥1,200
Labor (Hunan)	¥1,160	¥1,160	¥1,160	¥1,160	¥1,160	¥1,160	¥1,160	¥1,160	¥1,160	¥1,160	¥1,160	¥1,265
Labor (Average Above China Area)	¥1,282	¥1,282	¥1,310	¥1,368	¥1,368	¥1,368	¥1,368	¥1,392	¥1,392	¥1,392	¥1,392	¥1,413
Labor (Thailand)	THB 7,800	THB 7,800	THB 7,800	THB 7,800	THB 7,800	THB 7,800	THB 7,800	THB 7,800	THB 7,800	THB 7,800	THB 7,800	THB 7,800
Labor (Bangladesh)	BDT 3,837.30	BDT 3,837.30	BDT 3,837.30	BDT 3,837.30	BDT 3,837.30	BDT 3,837.30	BDT 3,837.30	BDT 3,837.30	BDT 3,837.30	BDT 3,837.30	BDT 3,837.30	BDT 3,837.30

2014												
Area	J	F	M	A	M	J	J	A	S	O	N	D
Labor (Guangdong-Shenzhen)	¥1,600	¥1,808	¥1,808	¥1,808	¥1,808	¥1,808	¥1,808	¥1,808	¥1,808	¥1,808	¥1,808	¥1,808
Labor (Shandong)	¥1,380	¥1,380	¥1,500	¥1,500	¥1,500	¥1,500	¥1,500	¥1,500	¥1,500	¥1,500	¥1,500	¥1,500
Labor (Tianjin)	¥1,310	¥1,310	¥1,310	¥1,500	¥1,500	¥1,500	¥1,500	¥1,500	¥1,500	¥1,500	¥1,500	¥1,500
Labor (Fujian)	¥1,200	¥1,200	¥1,200	¥1,200	¥1,200	¥1,200	¥1,200	¥1,200	¥1,200	¥1,200	¥1,200	¥1,200
Labor (Hunan)	¥1,265	¥1,265	¥1,265	¥1,265	¥1,265	¥1,265	¥1,265	¥1,265	¥1,265	¥1,265	¥1,265	¥1,265
Labor (Average Above China Area)	¥1,413	¥1,455	¥1,479	¥1,515	¥1,515	¥1,515	¥1,515	¥1,515	¥1,515	¥1,515	¥1,515	¥1,515
Labor (Thailand)	THB 7,800	THB 7,800	THB 7,800	THB 7,800	THB 7,800	THB 7,800	THB 7,800	THB 7,800	THB 7,800	THB 7,800	THB 7,800	THB 7,800
Labor (Bangladesh)	BDT 3,837.30	BDT 3,837.30	BDT 3,837.30	BDT 3,837.30	BDT 3,837.30	BDT 3,837.30	BDT 3,837.30	BDT 3,837.30	BDT 3,837.30	BDT 3,837.30	BDT 3,837.30	BDT 3,837.30

2015												
Area	J	F	M	A	M	J	J	A	S	O	N	D
Labor (Guangdong-Shenzhen)	¥1,808	¥1,808	¥2,030	¥2,030	¥2,030	¥2,030	¥2,030	¥2,030	¥2,030	¥2,030	¥2,030	¥2,030
Labor (Shandong)	¥1,500	¥1,500	¥1,600	¥1,600	¥1,600	¥1,600	¥1,600	¥1,600	¥1,600	¥1,600	¥1,600	¥1,600
Labor (Tianjin)	¥1,680	¥1,680	¥1,680	¥1,850	¥1,850	¥1,850	¥1,850	¥1,850	¥1,850	¥1,850	¥1,850	¥1,850
Labor (Fujian)	¥1,320	¥1,320	¥1,320	¥1,320	¥1,320	¥1,320	¥1,320	¥1,320	¥1,320	¥1,320	¥1,320	¥1,320
Labor (Hunan)	¥1,390	¥1,390	¥1,390	¥1,390	¥1,390	¥1,390	¥1,390	¥1,390	¥1,390	¥1,390	¥1,390	¥1,390
Labor (Average Above China Area)	¥1,540	¥1,540	¥1,604	¥1,638	¥1,638	¥1,638	¥1,638	¥1,638	¥1,638	¥1,638	¥1,638	¥1,638
Labor (Thailand)	THB 7,800	THB 7,800	THB 7,800	THB 7,800	THB 7,800	THB 7,800	THB 7,800	THB 7,800	THB 7,800	THB 7,800	THB 7,800	THB 7,800
Labor (Bangladesh)	BDT 5,300	BDT 5,300	BDT 5,300	BDT 5,300	BDT 5,300	BDT 5,300	BDT 5,300	BDT 5,300	BDT 5,300	BDT 5,300	BDT 5,300	BDT 5,300

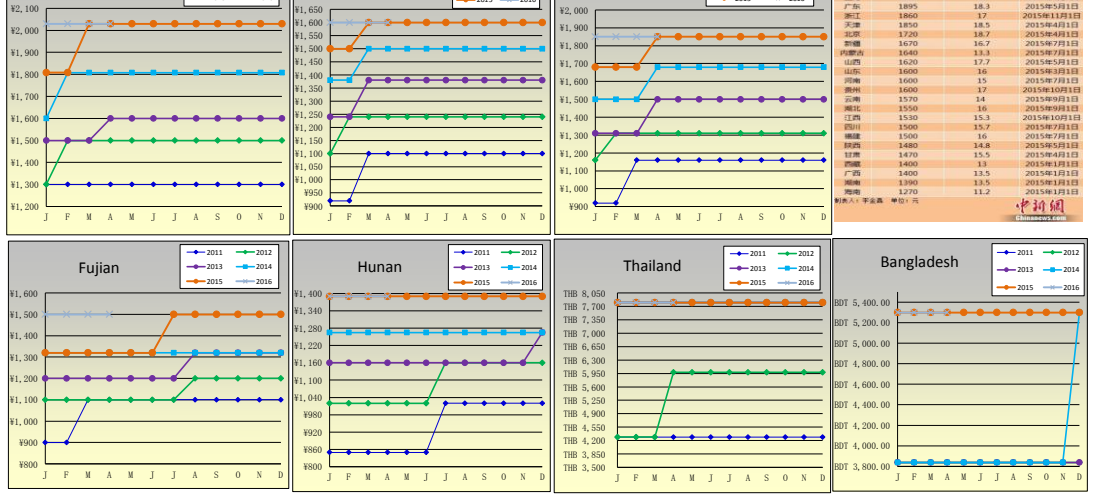
2016												
Area	J	F	M	A	M	J	J	A	S	O	N	D
Labor (Guangdong-Shenzhen)	¥2,030	¥2,030	¥2,030	¥2,030	¥2,030	¥2,030	¥2,030	¥2,030	¥2,030	¥2,030	¥2,030	¥2,030
Labor (Shandong)	¥1,600	¥1,600	¥1,600	¥1,600	¥1,600	¥1,600	¥1,600	¥1,600	¥1,600	¥1,600	¥1,600	¥1,600
Labor (Tianjin)	¥1,850	¥1,850	¥1,850	¥1,850	¥1,850	¥1,850	¥1,850	¥1,850	¥1,850	¥1,850	¥1,850	¥1,850
Labor (Fujian)	¥1,320	¥1,320	¥1,320	¥1,320	¥1,320	¥1,320	¥1,320	¥1,320	¥1,320	¥1,320	¥1,320	¥1,320
Labor (Hunan)	¥1,390	¥1,390	¥1,390	¥1,390	¥1,390	¥1,390	¥1,390	¥1,390	¥1,390	¥1,390	¥1,390	¥1,390
Labor (Average Above China Area)	¥1,674	¥1,674	¥1,674	¥1,674	¥1,674	¥1,674	¥1,674	¥1,674	¥1,674	¥1,674	¥1,674	¥1,674
Labor (Thailand)	THB 7,800	THB 7,800	THB 7,800	THB 7,800	THB 7,800	THB 7,800	THB 7,800	THB 7,800	THB 7,800	THB 7,800	THB 7,800	THB 7,800
Labor (Bangladesh)	BDT 5,300	BDT 5,300	BDT 5,300	BDT 5,300	BDT 5,300	BDT 5,300	BDT 5,300	BDT 5,300	BDT 5,300	BDT 5,300	BDT 5,300	BDT 5,300

Area	% Change 1 Month	% Change 3 Month	% Change 6 Month	% Change 12 Month
Labor (Guangdong-Shenzhen)	0.00%	0.00%	0.00%	0.00%
Labor (Shandong)	0.00%	0.00%	0.00%	0.00%
Labor (Tianjin)	0.00%	0.00%	0.00%	0.00%
Labor (Fujian)	0.00%	0.00%	0.00%	13.64%
Labor (Hunan)	0.00%	0.00%	0.00%	0.00%
Labor (Average Above China Area)	0.00%	0.00%	0.00%	2.20%
Labor (Thailand)	0.00%	0.00%	0.00%	0.00%
Labor (Bangladesh)	0.00%	0.00%	0.00%	0.00%

Remark:
 1. All Chinese numbers above are **minimum wage** required by government, based on **40 working hours every week**.
 2. Overtime Pay: Multiply 1.5 in the evening of work day; Multiply 2 in the weekend; Multiply 3 in the festival and holiday.
 3. In November 2015, Thailand's National Wage Committee agreed to keep the current min wage of 300 Baht per day (about US\$8.5/day) until **June 2016**. This is the same rate that was implemented in **January 2013**.
 4. **Dec. 2014**, Bangladesh raised the minimum wage for garment workers – up by 77%. To 5300 Taka (568) following a labor dispute that shut factories in the Ashulia industrial zone outside the capital city of Dhaka.

Commodity Measured Details	Gov't min wage (RMB/Mo)	Gov't min wage (RMB/Mo)	Gov't min wage (RMB/Mo)	Gov't min wage (RMB/Mo)	Gov't min wage (RMB/Mo)	Confirmed by HOME (THB/Mo)	Confirmed by SHINEPUKUR (BDT/Mo)

THB Data from: http://www.mol.go.th/en/Employee/Interesting_information/6319
 Data from: The Moscow Group



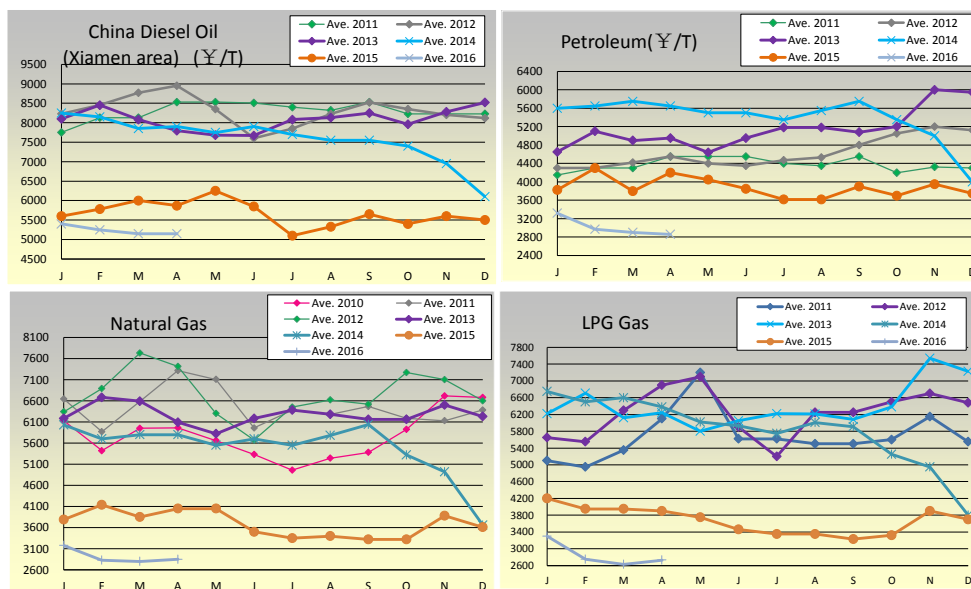
China Diesel Oil (Xiamen Area) (¥/T)	J	F	M	A	M	J	J	A	S	O	N	D	% Change 1 Month	% Change 3 Month	% Change 6 Month	% Change 12 Month
Ave. 2011	7750	8130	8130	8530	8530	8510	8400	8320	8530	8230	8230	8230				
Ave. 2012	8230	8455	8770	8950	8350	7600	7850	8230	8520	8350	8200	8120				
Ave. 2013	8100	8450	8080	7795	7680	7670	8080	8130	8250	7960	8280	8520				
Ave. 2014	8250	8150	7850	7900	7750	7900	7700	7550	7550	7400	6950	6100				
Ave. 2015	5600	5780	6000	5870	6250	5850	5100	5330	5650	5400	5600	5500	0.00%	-4.63%	-4.63%	-12.27%
Ave. 2016	5400	5250	5150	5150												

Petroleum石油(¥/T)	J	F	M	A	M	J	J	A	S	O	N	D	% Change 1 Month	% Change 3 Month	% Change 6 Month	% Change 12 Month
Ave. 2011	4150	4300	4300	4550	4550	4550	4400	4350	4550	4200	4325	4300				
Ave. 2012	4300	4300	4420	4550	4400	4350	4470	4530	4800	5050	5200	5125				
Ave. 2013	4650	5100	4900	4950	4640	4950	5180	5180	5080	5200	6000	5950				
Ave. 2014	5600	5650	5750	5650	5500	5500	5350	5550	5750	5350	5000	4000				
Ave. 2015	3825	4300	3800	4200	4050	3850	3620	3620	3900	3700	3950	3750	-1.38%	#####	-22.70%	-31.90%
Ave. 2016	3320	2970	2900	2860												

Natural Gas (天然气) 茂名石化 (¥/T)	J	F	M	A	M	J	J	A	S	O	N	D	% Change 1 Month	% Change 3 Month	% Change 6 Month	% Change 12 Month
Ave. 2010	6130	5420	5950	5960	5660	5330	4961	5242	5380	5925	6716	6680				
Ave. 2011	6644	5869	6591	7317	7107	5956	6375	6280	6466	6187	6130	6382				
Ave. 2012	6340	6890	7730	7415	6300	5670	6450	6620	6520	7270	7100	6600				
Ave. 2013	6180	6680	6590	6090	5820	6180	6380	6280	6160	6160	6500	6230				
Ave. 2014	6030	5700	5800	5800	5550	5700	5550	5780	6040	5320	4920	3660				
Ave. 2015	3790	4140	3850	4050	4050	3500	3350	3400	3320	3320	3880	3610	1.79%	#####	-14.16%	-29.63%
Ave. 2016	3180	2830	2800	2850												

LPG Gas 液化石油气 (¥/T)	J	F	M	A	M	J	J	A	S	O	N	D	% Change 1 Month	% Change 3 Month	% Change 6 Month	% Change 12 Month
Ave. 2011	5100	4950	5350	6100	7200	5620	5620	5500	5500	5600	6150	5550				
Ave. 2012	5650	5550	6300	6900	7100	5900	5200	6250	6250	6500	6700	6480				
Ave. 2013	6220	6710	6120	6240	5800	6050	6220	6210	6080	6380	7540	7230				
Ave. 2014	6750	6500	6600	6380	6020	5930	5750	6010	5910	5250	4950	3800				
Ave. 2015	4200	3950	3950	3900	3750	3460	3350	3350	3230	3320	3900	3700	3.80%	#####	-17.77%	-30.00%
Ave. 2016	3300	2750	2630	2730												

from: <http://www.chinaccm.com/>



Freight cost(\$)

Freight Cost-Xiamen Port	J	F	M	A	M	J	J	A	S	O	N	D
2011 Xiamen To Chicago-20'	2865	2865	2865	2865	2865	2865	2865	2865	2865	2865	2865	2865
2011 Xiamen To Chicago-40'	3435	3435	3435	3435	3435	3435	3435	3435	3435	3435	3435	3435
2011 Xiamen To Chicago-40HQ'	3535	3535	3535	3535	3535	3535	3535	3535	3535	3535	3535	3535
2011 Xiamen To Chicago-45'	3930	3930	3930	3930	3930	3930	3930	3930	3930	3930	3930	3930
2011 Xiamen To Long Beach-20'	1900	1900	1900	1900	1900	1900	1900	1900	1900	1900	1900	1900
2011 Xiamen To Long Beach-40'	2150	2150	2150	2150	2150	2150	2150	2150	2150	2150	2150	2150
2011 Xiamen To Long Beach-40HQ'	2385	2385	2385	2385	2385	2385	2385	2385	2385	2385	2385	2385
2011 Xiamen To Long Beach-45'	2785	2785	2785	2785	2785	2785	2785	2785	2785	2785	2785	2785
Freight Cost-Xiamen Port	J	F	M	A	M	J	J	A	S	O	N	D
2012 Xiamen To Chicago-20'	3020	3020	3120	3120	3120	3500	3500	3500	3500	3500	3500	3540
2012 Xiamen To Chicago-40'	3600	3600	3700	3700	3700	4200	4200	4200	4200	4200	4200	4300
2012 Xiamen To Chicago-40HQ'	3748	3748	3888	3888	3888	4463	4463	4463	4463	4463	4463	4488
2012 Xiamen To Chicago-45'	4216	4216	4416	4416	4416	5076	5076	5076	5076	5076	5076	5196
2012 Xiamen To Long Beach-20'	2055	2055	2155	2155	2155	2535	2535	2535	2535	2535	2535	2575
2012 Xiamen To Long Beach-40'	2318	2318	2418	2418	2418	2918	2918	2918	2918	2918	2918	3018
2012 Xiamen To Long Beach-40HQ'	2600	2600	2740	2740	2740	3315	3315	3315	3315	3315	3315	3340
2012 Xiamen To Long Beach-45'	2871	2871	3071	3071	3071	3731	3731	3731	3731	3731	3731	3851
Freight Cost-Xiamen Port	J	F	M	A	M	J	J	A	S	O	N	D
2013 Xiamen To Chicago-20'	3540	3540	3540	3540	3540	3540	3540	3540	3540	3540	3540	3540
2013 Xiamen To Chicago-40'	4300	4300	4300	4300	4300	4300	4300	4300	4300	4300	4300	4300
2013 Xiamen To Chicago-40HQ'	4488	4488	4488	4488	4488	4488	4488	4488	4488	4488	4488	4488
2013 Xiamen To Chicago-45'	5196	5196	5196	5196	5196	5196	5196	5196	5196	5196	5196	5196
2013 Xiamen To Long Beach-20'	2575	2575	2575	2575	2575	2575	2575	2575	2575	2575	2575	2575
2013 Xiamen To Long Beach-40'	3018	3018	3018	3018	3018	3018	3018	3018	3018	3018	3018	3018
2013 Xiamen To Long Beach-40HQ'	3340	3340	3340	3340	3340	3340	3340	3340	3340	3340	3340	3340
2013 Xiamen To Long Beach-45'	3851	3851	3851	3851	3851	3851	3851	3851	3851	3851	3851	3851
Freight Cost-Xiamen Port	J	F	M	A	M	J	J	A	S	O	N	D
2014 Xiamen To Chicago-20'	3540	3540	3540	3540	3540	3540	3540	4610	4610	4610	4930	4930
2014 Xiamen To Chicago-40'	4300	4300	4300	4300	4300	4300	4300	5290	5290	5290	5690	5690
2014 Xiamen To Chicago-40HQ'	4488	4488	4488	4488	4488	4488	4488	5490	5490	5490	5890	5890
2014 Xiamen To Chicago-45'	5196	5196	5196	5196	5196	5196	5196	6196	6196	6196	6596	6596
2014 Xiamen To Long Beach-20'	2575	2575	2575	2575	2575	2575	2575	2973	2973	2973	3293	3293
2014 Xiamen To Long Beach-40'	3018	3018	3018	3018	3018	3018	3018	3781	3781	3781	4181	4181
2014 Xiamen To Long Beach-40HQ'	3340	3340	3340	3340	3340	3340	3340	3986	3986	3986	4386	4386
2014 Xiamen To Long Beach-45'	3851	3851	3851	3851	3851	3851	3851	4394	4394	4394	4794	4794
Freight Cost-Xiamen Port	J	F	M	A	M	J	J	A	S	O	N	D
2015 Xiamen To Chicago-20'	4930	4930	4930	4930	4930	4930	4930	4930	4930	4930	4930	4930
2015 Xiamen To Chicago-40'	5690	5690	5690	5690	5690	5690	5690	5690	5690	5690	5690	5690
2015 Xiamen To Chicago-40HQ'	5890	5890	5890	5890	5890	5890	5890	5890	5890	5890	5890	5890
2015 Xiamen To Chicago-45'	6596	6596	6596	6596	6596	6596	6596	7596	7596	7596	7996	7996
2015 Xiamen To Long Beach-20'	3293	3293	3293	3293	3293	3293	3293	3293	3293	3293	3293	3293
2015 Xiamen To Long Beach-40'	4181	4181	4181	4181	4181	4181	4181	4181	4181	4181	4181	4181
2015 Xiamen To Long Beach-40HQ'	4386	4386	4386	4386	4386	4386	4386	4386	4386	4386	4386	4386
2015 Xiamen To Long Beach-45'	4794	4794	4794	4794	4794	4794	4794	4794	4794	4794	4794	4794
Freight Cost-Xiamen Port	J	F	M	A	M	J	J	A	S	O	N	D
2016 Xiamen To Chicago-20'	4031	3800	3800	3800	3800							
2016 Xiamen To Chicago-40'	4756	4449	4449	4449	4449							
2016 Xiamen To Chicago-40HQ'	4837	4507	4507	4507	4507							
2016 Xiamen To Chicago-45'	5553	5130	5130	5130	5130							
2016 Xiamen To Long Beach-20'	2413	2138	2138	2138	2138							
2016 Xiamen To Long Beach-40'	2952	2532	2532	2532	2532							
2016 Xiamen To Long Beach-40HQ'	3007	2587	2587	2587	2587							
2016 Xiamen To Long Beach-45'	3333	2898	2898	2898	2898							
Freight Cost-Yantian Port	J	F	M	A	M	J	J	A	S	O	N	D
2011 Yantian To Chicago-20'	2537	2537	2537	2537	2537	2537	2537	2537	2537	2537	2537	2537
2011 Yantian To Chicago-40'	3108	3108	3108	3108	3108	3108	3108	3108	3108	3108	3108	3108
2011 Yantian To Chicago-40HQ'	3173	3173	3173	3173	3173	3173	3173	3173	3173	3173	3173	3173
2011 Yantian To Chicago-45'	1665	1665	1665	1665	1665	1665	1665	1665	1665	1665	1665	1665
2011 Yantian To Long Beach-20'	1998	1998	1998	1998	1998	1998	1998	1998	1998	1998	1998	1998
2011 Yantian To Long Beach-40'	2040	2040	2040	2040	2040	2040	2040	2040	2040	2040	2040	2040
2011 Yantian To Long Beach-45'	2171	2171	2171	2171	2171	2171	2171	2171	2171	2171	2171	2171
Freight Cost-Yantian Port	J	F	M	A	M	J	J	A	S	O	N	D
2012 Yantian To Chicago-20'	2667	2667	2767	2767	2767	3147	3147	3147	3147	3147	3147	3187
2012 Yantian To Chicago-40'	3298	3298	3398	3398	3398	3898	3898	3898	3898	3898	3898	3998
2012 Yantian To Chicago-40HQ'	3443	3443	3583	3583	3583	4158	4158	4158	4158	4158	4158	4183
2012 Yantian To Chicago-45'	1486	1486	1586	1586	1586	1966	1966	1966	1966	1966	1966	2006
2012 Yantian To Long Beach-20'	1806	1806	1906	1906	1906	2406	2406	2406	2406	2406	2406	2506
2012 Yantian To Long Beach-40'	1896	1896	2036	2036	2036	2611	2611	2611	2611	2611	2611	2636
Freight Cost-Yantian Port	J	F	M	A	M	J	J	A	S	O	N	D
2013 Yantian To Chicago-20'	3187	3187	3187	3187	3187	3187	3187	3187	3187	3187	3187	3187
2013 Yantian To Chicago-40'	3998	3998	3998	3998	3998	3998	3998	3998	3998	3998	3998	3998
2013 Yantian To Chicago-40HQ'	4183	4183	4183	4183	4183	4183	4183	4183	4183	4183	4183	4183
2013 Yantian To Chicago-45'	2006	2006	2006	2006	2006	2006	2006	2006	2006	2006	2006	2006
2013 Yantian To Long Beach-20'	2506	2506	2506	2506	2506	2506	2506	2506	2506	2506	2506	2506
2013 Yantian To Long Beach-40'	2636	2636	2636	2636	2636	2636	2636	2636	2636	2636	2636	2636
Freight Cost-Yantian Port	J	F	M	A	M	J	J	A	S	O	N	D
2014 Yantian To Chicago-20'	3187	3187	3187	3187	3187	3187	3187	4610	4610	4610	4930	4930
2014 Yantian To Chicago-40'	3998	3998	3998	3998	3998	3998	3998	5290	5290	5290	5690	5690
2014 Yantian To Chicago-40HQ'	4183	4183	4183	4183	4183	4183	4183	5490	5490	5490	5890	5890
2014 Yantian To Chicago-45'	2006	2006	2006	2006	2006	2006	2006	3321	3321	3321	3641	3641
2014 Yantian To Long Beach-20'	2506	2506	2506	2506	2506	2506	2506	4093	4093	4093	4493	4493
2014 Yantian To Long Beach-40'	2636	2636	2636	2636	2636	2636	2636	4293	4293	4293	4693	4693
Freight Cost-Yantian Port	J	F	M	A	M	J	J	A	S	O	N	D
2015 Yantian To Chicago-20'	4930	4930	4930	4930	4930	4930	4930	4930	4930	4930	4930	4930
2015 Yantian To Chicago-40'	5690	5690	5690	5690	5690	5690	5690	5690	5690	5690	5690	5690
2015 Yantian To Chicago-40HQ'	5890	5890	5890	5890	5890	5890	5890	5890	5890	5890	5890	5890
2015 Yantian To Chicago-45'	6596	6596	6596	6596	6596	6596	6596	7596	7596	7596	7996	7996
2015 Yantian To Long Beach-20'	3641	3641	3641	3641	3641	3641	3641	3641	3641	3641	3641	3641
2015 Yantian To Long Beach-40'	4493	4493	4493	4493	4493	4493	4493	4493	4493	4493	4493	4493
2015 Yantian To Long Beach-40HQ'	4693	4693	4693	4693								

Freight cost(\$)

Freight Cost-Ningbo Port	J	F	M	A	M	J	J	A	S	O	N	D
2011 Ningbo To Chicago-20'	2516	2516	2516	2516	2516	2516	2516	2516	2516	2516	2516	2516
2011 Ningbo To Chicago-40'	3066	3066	3066	3066	3066	3066	3066	3066	3066	3066	3066	3066
2011 Ningbo To Chicago-40HQ'	3131	3131	3131	3131	3131	3131	3131	3131	3131	3131	3131	3131
2011 Ningbo To Chicago-45'												
2011 Ningbo To Long Beach-20'	1545	1545	1545	1545	1545	1545	1545	1545	1545	1545	1545	1545
2011 Ningbo To Long Beach-40'	1948	1948	1948	1948	1948	1948	1948	1948	1948	1948	1948	1948
2011 Ningbo To Long Beach-40HQ'	2040	2040	2040	2040	2040	2040	2040	2040	2040	2040	2040	2040
2011 Ningbo To Long Beach-45'	2355	2355	2355	2355	2355	2355	2355	2355	2355	2355	2355	2355

Freight Cost-Ningbo Port	J	F	M	A	M	J	J	A	S	O	N	D
2012 Ningbo To Chicago-20'	2646	2646	2746	2746	2746	3126	3126	3126	3126	3126	3126	3126
2012 Ningbo To Chicago-40'	3256	3256	3356	3356	3356	3856	3856	3856	3856	3856	3856	3856
2012 Ningbo To Chicago-40HQ'	3401	3401	3541	3541	3541	4116	4116	4116	4116	4116	4116	4141
2012 Ningbo To Chicago-45'												
2012 Ningbo To Long Beach-20'	1446	1446	1546	1546	1546	1926	1926	1926	1926	1926	1926	1966
2012 Ningbo To Long Beach-40'	1756	1756	1856	1856	1856	2356	2356	2356	2356	2356	2356	2456
2012 Ningbo To Long Beach-40HQ'	1845	1845	1985	1985	1985	2560	2560	2560	2560	2560	2560	2585
2012 Ningbo To Long Beach-45'	2073	2273	2273	2473	2473	3133	3133	3133	3133	3133	3133	3133

Freight Cost-Ningbo Port	J	F	M	A	M	J	J	A	S	O	N	D
2013 Ningbo To Chicago-20'	3166	3166	3166	3166	3166	3166	3166	3166	3166	3166	3166	3166
2013 Ningbo To Chicago-40'	3956	3956	3956	3956	3956	3956	3956	3956	3956	3956	3956	3956
2013 Ningbo To Chicago-40HQ'	4141	4141	4141	4141	4141	4141	4141	4141	4141	4141	4141	4141
2013 Ningbo To Chicago-45'												
2013 Ningbo To Long Beach-20'	1966	1966	1966	1966	1966	1966	1966	1966	1966	1966	1966	1966
2013 Ningbo To Long Beach-40'	2456	2456	2456	2456	2456	2456	2456	2456	2456	2456	2456	2456
2013 Ningbo To Long Beach-40HQ'	2585	2585	2585	2585	2585	2585	2585	2585	2585	2585	2585	2585
2013 Ningbo To Long Beach-45'	3133	3133	3133	3133	3133	3133	3133	3133	3133	3133	3133	3133

Freight Cost-Ningbo Port	J	F	M	A	M	J	J	A	S	O	N	D
2014 Ningbo To Chicago-20'	3166	3166	3166	3166	3166	3166	3166	4610	4610	4610	4930	4930
2014 Ningbo To Chicago-40'	3956	3956	3956	3956	3956	3956	3956	5290	5290	5290	5690	5690
2014 Ningbo To Chicago-40HQ'	4141	4141	4141	4141	4141	4141	4141	5490	5490	5490	5890	5890
2014 Ningbo To Chicago-45'												
2014 Ningbo To Long Beach-20'	1966	1966	1966	1966	1966	1966	1966	3321	3321	3321	3641	3641
2014 Ningbo To Long Beach-40'	2456	2456	2456	2456	2456	2456	2456	4093	4093	4093	4493	4493
2014 Ningbo To Long Beach-40HQ'	2585	2585	2585	2585	2585	2585	2585	4293	4293	4293	4693	4693
2014 Ningbo To Long Beach-45'	3133	3133	3133	3133	3133	3133	3133					

Freight Cost-Ningbo Port	J	F	M	A	M	J	J	A	S	O	N	D
2015 Ningbo To Chicago-20'	4930	4930	4930	4930	4930	4930	4930	4930	4930	4930	4930	4930
2015 Ningbo To Chicago-40'	5690	5690	5690	5690	5690	5690	5690	5690	5690	5690	5690	5690
2015 Ningbo To Chicago-40HQ'	5890	5890	5890	5890	5890	5890	5890	5890	5890	5890	5890	5890
2015 Ningbo To Chicago-45'												
2015 Ningbo To Long Beach-20'	3641	3641	3641	3641	3641	3641	3641	3641	3641	3641	3641	3641
2015 Ningbo To Long Beach-40'	4493	4493	4493	4493	4493	4493	4493	4493	4493	4493	4493	4493
2015 Ningbo To Long Beach-40HQ'	4693	4693	4693	4693	4693	4693	4693	4693	4693	4693	4693	4693
2015 Ningbo To Long Beach-45'												

Freight Cost-Ningbo Port	J	F	M	A	M	J	J	A	S	O	N	D	% Change 1 Month	% Change 3 Month	% Change 6 Month	% Change 12 Month
2016 Ningbo To Chicago-20'	4021	3800	3800	3800	3800								0.00%	-5.74%	-22.92%	-22.92%
2016 Ningbo To Chicago-40'	4756	4449	4449	4449	4449								0.00%	-6.45%	-21.80%	-21.80%
2016 Ningbo To Chicago-40HQ'	4837	4507	4507	4507	4507								0.00%	-6.83%	-23.49%	-23.49%
2016 Ningbo To Chicago-45'	5553	5130	5130	5130	5130											
2016 Ningbo To Long Beach-20'	2413	2138	2138	2138	2138								0.00%	-11.40%	-41.29%	-41.29%
2016 Ningbo To Long Beach-40'	2952	2532	2532	2532	2532								0.00%	-14.23%	-43.66%	-43.66%
2016 Ningbo To Long Beach-40HQ'	3007	2587	2587	2587	2587								0.00%	-13.97%	-44.89%	-44.89%
2016 Ningbo To Long Beach-45'	3333	2898	2898	2898	2898											

Freight Cost-Shanghai Port	J	F	M	A	M	J	J	A	S	O	N	D
2011 Shanghai To Chicago-20'	2616	2616	2616	2616	2616	2616	2616	2616	2616	2616	2616	2616
2011 Shanghai To Chicago-40'	3166	3166	3166	3166	3166	3166	3166	3166	3166	3166	3166	3166
2011 Shanghai To Chicago-40HQ'	3231	3231	3231	3231	3231	3231	3231	3231	3231	3231	3231	3231
2011 Shanghai To Chicago-45'												
2011 Shanghai To Long Beach-20'	1551	1551	1551	1551	1551	1551	1551	1551	1551	1551	1551	1551
2011 Shanghai To Long Beach-40'	1955	1955	1955	1955	1955	1955	1955	1955	1955	1955	1955	1955
2011 Shanghai To Long Beach-40HQ'	2046	2046	2046	2046	2046	2046	2046	2046	2046	2046	2046	2046
2011 Shanghai To Long Beach-45'	2271	2271	2271	2271	2271	2271	2271	2271	2271	2271	2271	2271

Freight Cost-Shanghai Port	J	F	M	A	M	J	J	A	S	O	N	D
2012 Shanghai To Chicago-20'	2746	2746	2846	2846	2846	3226	3226	3226	3226	3226	3226	3266
2012 Shanghai To Chicago-40'	3356	3356	3456	3456	3456	3956	3956	3956	3956	3956	3956	4056
2012 Shanghai To Chicago-40HQ'	3501	3501	3641	3641	3641	4216	4216	4216	4216	4216	4216	4241
2012 Shanghai To Chicago-45'												
2012 Shanghai To Long Beach-20'	1546	1546	1646	1646	1646	2026	2026	2026	2026	2026	2026	2066
2012 Shanghai To Long Beach-40'	1856	1856	1956	1956	1956	2456	2456	2456	2456	2456	2456	2556
2012 Shanghai To Long Beach-40HQ'	1945	1945	2085	2085	2085	2660	2660	2660	2660	2660	2660	2685
2012 Shanghai To Long Beach-45'	1990	2190	2190	2390	2390	3050	3050	3050	3050	3050	3050	3050

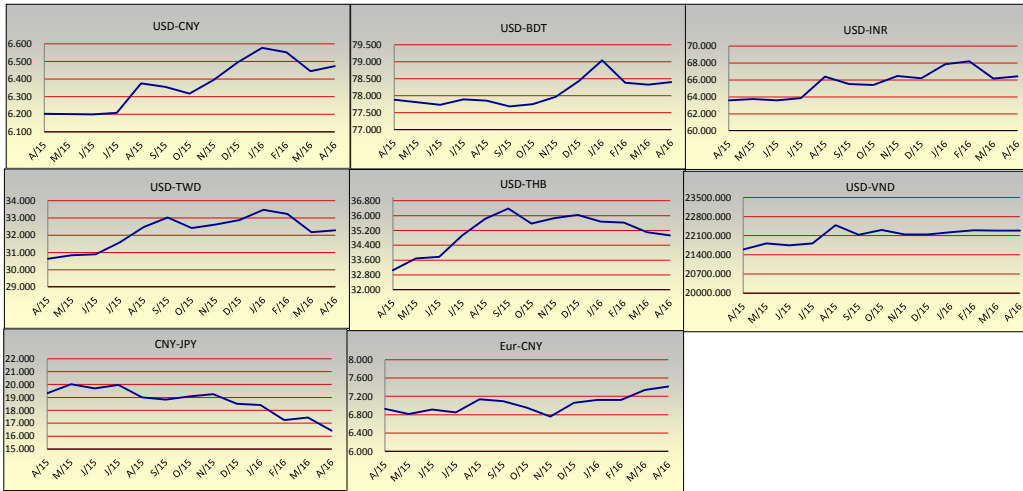
Freight Cost-Shanghai Port	J	F	M	A	M	J	J	A	S	O	N	D
2013 Shanghai To Chicago-20'	3266	3266	3266	3266	3266	3266	3266	3266	3266	3266	3266	3266
2013 Shanghai To Chicago-40'	4056	4056	4056	4056	4056	4056	4056	4056	4056	4056	4056	4056
2013 Shanghai To Chicago-40HQ'	4241	4241	4241	4241	4241	4241	4241	4241	4241	4241	4241	4241
2013 Shanghai To Chicago-45'												
2013 Shanghai To Long Beach-20'	2066	2066	2066	2066	2066	2066	2066	2066	2066	2066	2066	2066
2013 Shanghai To Long Beach-40'	2556	2556	2556	2556	2556	2556	2556	2556	2556	2556	2556	2556
2013 Shanghai To Long Beach-40HQ'	2685	2685	2685	2685	2685	2685	2685	2685	2685	2685	2685	2685
2013 Shanghai To Long Beach-45'	3050	3050	3050	3050	3050	3050	3050	3050	3050	3050	3050	3050

Freight Cost-Shanghai Port	J	F	M	A	M	J	J	A	S	O	N	D
2014 Shanghai To Chicago-20'	3266	3266	3266	3266	3266	3266	3266	4610	4610	4610	4930	4930
2014 Shanghai To Chicago-40'	4056	4056	4056	4056	4056	4056	4056	5290	5290	5290	5690	5690
2014 Shanghai To Chicago-40HQ'	4241	4241	4241	4241	4241	4241	4241	5490	5490	5490	5890	5890
2014 Shanghai To Chicago-45'												
2014 Shanghai To Long Beach-20'	2066	2066	2066	2066	2066	2066	2066	3321	3321	3321	3641	3641
2014 Shanghai To Long Beach-40'	2556	2556	2556	2556	2556	2556	2556	4093	4093	4093	4493	4493
2014 Shanghai To Long Beach-40HQ'	2685	2685	2685	2685	2685	2685	2685	4293	4293	4293	4693	4693
2014 Shanghai To Long Beach-45'	3050	3050	3050	3050								

Exchange Rate

Exchange Rate	Monthly												% Change 1 Month	% Change 3 Month	% Change 6 Month	% Change 12 Month	
	Apr/15	May/15	Jun/15	Jul/15	Aug/15	Sep/15	Oct/15	Nov/15	Dec/15	Jan/16	Feb/16	Mar/16					Apr/16
USD-CNY (China RMB)	6.2031	6.2012	6.1988	6.2085	6.3760	6.3564	6.3181	6.3962	6.4952	6.5770	6.5530	6.4447	6.4738	0.45%	-1.57%	2.46%	4.36%
USD-BDT (Bangladesh Taka)	77.8822	77.8028	77.7300	77.8959	77.8550	77.6880	77.7500	77.9700	78.4261	79.0440	78.3811	78.3245	78.4057	0.10%	-0.81%	0.84%	0.67%
USD-INR (Indian Rupee)	63.5900	63.7475	63.6017	63.8785	66.4027	65.5147	65.4205	66.4785	66.2014	67.8900	68.2328	66.1753	66.4240	0.38%	-2.16%	1.53%	4.46%
USD-TWD (Taiwan New Dollar)	30.6354	30.8385	30.8905	31.5750	32.4706	33.0245	32.4250	32.6250	32.8740	33.4700	33.2398	32.1796	32.2850	0.33%	-3.54%	-0.43%	5.38%
USD-THB (Thai Baht)	33.0442	33.6895	33.7800	34.9326	35.8365	36.3766	35.5700	35.8600	36.0324	35.6845	35.6213	35.1039	34.9275	-0.50%	-2.12%	-1.81%	5.70%
USD-VND (Vietnamese Dong)	21594	21815	21750	21820	22485	22138	22313	22150	22150	22232	22297	22292	22287	-0.02%	0.25%	-0.12%	3.21%
CNY-JPY (Japanese Yen)	19.3239	20.0219	19.7070	19.9618	19.0140	18.8430	19.0918	19.2641	18.5221	18.4237	17.2352	17.4444	16.4325	-5.80%	-10.81%	-13.93%	-14.96%
EUR-CNY (Euro)	6.9296	6.8165	6.9133	6.8490	7.1396	7.0962	6.9537	6.7574	7.0580	7.1235	7.1204	7.3399	7.4131	1.00%	4.06%	6.61%	6.98%

Data from "www.xe.com"



Export VAT Rebate For Various Commodities

DESCRIPTION	VAT REBATE %	HARMONIZED TARIFF #
First Aid Kits	15%	3006500000
Garden Coil Hose	13%	3917310000
EMBLEM H LOGO 3 IN	13%	3926909090
PU handbags	15%	4202210090
Dinnerware	13%	6911101000
Glassware	13%	7013995000
Holloware	9%	7323930080
Steel Parts	9%	7326909000
Brass tube/fitting	0%	7412209000
Aluminum parts	13%	7616991090
Wrench	9%	8204110000
Steak Knife	5%	8211915030
Flatware	9%	8215990000
Serving Pieces	9%	8215993500
AC Cooling Fan	15%	8414599099
Heat Exchanger	17%	8418991000
Plastic Filter Housing	15%	8421999000
CNC machine components	15%	8466940090
Pneumatic Parts	15%	8467920000
Ball Bearings	15%	8482102000
GFCI	17%	8536300000
Cable	17%	8544422100
Other equipts & apparatus for optthalmology (M.I.D.)	17%	9018500000
Exercise Equipment	13%	9506911900
Sporting Goods	13%	9506919000
Boar Bristle Brushes	13%	9603909020
Toddler Sleepwear & Bibs	15%	6111200050/6111200090
Pump and accessories	14%	8413200000
Vacuum cleaners	17%	8508110000
Exhaust Tips	6%	8708925000
Lawn Spreaders	13%	8708925000
Displays	15%	9403200020
Dial Thermometer	15%	9025802000
DVD	13%	8471701000
Electric Cable with connector	17%	4202929050
Electronic parts	13%	8542310000
Fabric Activity Products	13%	4202993000
Fan	15%	4107112000

CONFIDENTIAL

© Source Int'l, LP, 2016, All Rights Reserved

Export VAT Rebate For Various Commodities

DESCRIPTION	VAT REBATE %	HARMONIZED TARIFF #
Hydrometer	15%	9025802000
iPad/iPhone case	13%	4202929050
Liquid Thermometer	13%	9025802000
Low voltage circuit protector	17%	8536304000
Mesh bag items	13%	3923210085
Metal Clip	5%	8214203000/8305903000
Musical Instrument Cases	13%	4202929050
Ophthalmology equipment	17%	7308909530
Outdoor Chairs/Tent	13%	0401300200
Paper Box	13%	4202228070
Plastic Balls	13%	3812303000
Plastic Parts	13%	3906902000
Plastic Soft Tube	13%	3915900010
Refrigeration components	17%	8418998005/9032896015
Scoop	13%	9607110000 /9607190020
Swivel Head Screw	13%	8205400000
Toys	9%	4016992000/6307907500
Wire Cradle	9%	8466942000
Wooden Box	9%	3405200000
Wooden products	13%	3405200000

Reference:

<http://hts.usitc.gov/>

<http://ts.acsoft.cn/tslxc.aspx>

<http://www.hsbianma.com/>

<http://www.usitc.gov/tata/hts/bychapter/index.htm>

<http://www.ertoolsage.com/Query/USHTSC.asp?HTS=blanket>

<http://www.hsbianma.com/>

CONFIDENTIAL

© Source Int'l, LP, 2016, All Rights Reserved

Purchasing Managers Index													
PMI		2012											
		J	F	M	A	M	J	J	A	S	O	N	D
China	China Federation of Logistics & Purchasing (CFLP)	50.5	51.0	53.1	53.5	50.4	50.2	50.1	49.2	49.8	50.2	50.6	50.6
	Hong Kong(HSBC)	48.8	49.6	48.3	49.3	48.4	48.2	49.3	47.6	47.9	49.5	50.5	51.7
USA		54.1	52.4	53.4	54.8	53.5	49.7	49.8	49.6	51.5	51.7	49.5	50.7
PMI		2013											
		J	F	M	A	M	J	J	A	S	O	N	D
China	China Federation of Logistics & Purchasing (CFLP)	50.4	50.1	50.9	50.6	50.8	50.1	50.3	51.0	51.1	51.4	51.4	51.0
	Hong Kong(HSBC)	52.3	50.4	51.6	50.4	49.2	48.2	47.7	50.1	50.2	50.9	50.8	50.5
USA		53.1	54.2	51.3	50.7	49.0	50.9	55.4	55.7	56.2	56.4	57.3	57.0
PMI		2014											
		J	F	M	A	M	J	J	A	S	O	N	D
China	China Federation of Logistics & Purchasing (CFLP)	50.5	50.2	50.3	50.4	50.8	51.0	51.7	51.1	51.1	50.8	50.3	50.1
	Hong Kong(HSBC)	49.5	48.5	48.0	48.1	49.4	50.7	51.7	50.2	50.2	50.4	50.0	49.6
USA		51.3	53.2	53.7	54.9	55.4	55.3	57.1	59.0	56.6	59.0	58.7	55.5
PMI		2015											
		J	F	M	A	M	J	J	A	S	O	N	D
China	China Federation of Logistics & Purchasing (CFLP)	49.8	49.9	50.1	50.1	50.2	50.2	50.0	49.7	49.8	49.8	49.6	49.7
	Hong Kong(HSBC) / Caixin/Markit China Manufacturing	49.7	50.7	49.6	48.9	49.2	49.4	47.8	47.3	47.2	48.3	48.6	48.2
USA		53.5	52.9	51.5	51.5	52.8	53.5	52.7	51.1	50.2	50.1	48.6	48.0
PMI		2016											
		J	F	M	A	M	J	J	A	S	O	N	D
China	China Federation of Logistics & Purchasing (CFLP)	49.4	49.0	50.2	50.1								
	Hong Kong(HSBC) / Caixin/Markit China Manufacturing	48.4	48.0	49.7	49.4								
USA		48.2	49.5	51.8	50.8								

Change From Previous Month	Change From 1 Year
-0.20%	0.00%
-0.63%	1.01%
-2.02%	-1.36%

Source:		
China	China Federation of Logistics & Purchasing (CFLP)	www.stats.gov.cn/
China	Hong Kong(HSBC) / Caixin/Markit China Manufacturing	http://pmi.caixin.com/
USA		http://www.ism.ws/

China Trade Data													
China Trade Data (Billions Of USD)		2012											
		J	F	M	A	M	J	J	A	S	O	N	D
Imports		150	146	166	145	162	148	152	151	159	149	160	168
Exports		123	115	160	163	181	180	177	178	186	167	179	199
Trade Balance		(27)	(32)	(5)	18	19	32	25	27	28	18	20	32
China Trade Data (Billions Of USD)		2013											
		J	F	M	A	M	J	J	A	S	O	N	D
Imports		158	124	183	169	162	147	168	162	170	154	168	182
Exports		187	139	182	187	183	174	186	191	186	185	202	208
Trade Balance		29	15	(1)	18	20	27	18	29	15	31	34	26
China Trade Data (Billions Of USD)		2014											
		J	F	M	A	M	J	J	A	S	O	N	D
Imports		175	137	162	170	160	155	166	159	183	161	157	178
Exports		207	114	170	189	195	187	213	208	214	207	212	228
Trade Balance		32	(23)	8	18	36	32	47	50	31	45	54	50
China Trade Data (Billions Of USD)		2015											
		J	F	M	A	M	J	J	A	S	O	N	D
Imports		140	109	141	142	131	145	152	137	145	131	143	164
Exports		200	169	145	176	190	192	195	197	206	192	197	224
Trade Balance		60	61	3	34	59	47	43	60	60	62	54	60
China Trade Data (Billions Of USD)		2016											
		J	F	M	A	M	J	J	A	S	O	N	D
Imports		114	94	131									
Exports		177	126	161									
Trade Balance		63	33	30	0	0	0	0	0	0	0	0	0

Change From Previous Month	% Change 1 Month	Change From 1 Year	% Change 12 Month
37.40	39.98%	(10.53)	-7.44%
34.67	27.48%	16.24	11.24%

Source: <http://www.chinacustomsstat.com>

Producer Price Index (China PPI)--Price Index												
Month Year	J	F	M	A	M	J	J	A	S	O	N	D
1993	117.9	118.2	121.3	122.3	126.0	125.3	125.7	125.9	124.6	124.1	122.5	122.0
1994	118.6	116.5	117.9	119.6	120.2	119.1	120.1	118.1	118.5	118.2	119.9	119.9
1995	120.7	120.2	119.5	117.1	113.9	113.8	113.5	112.9	112.9	112.5	111.1	108.8
1996	108.4	107.1	104.3	103.0	102.7	102.3	101.7	101.5	100.8	100.3	100.0	100.4
1997	100.1	100.4	100.5	100.1	100.1	99.6	99.4	99.1	99.1	99.1	99.4	99.1
1998	98.7	97.4	96.8	96.3	95.5	95.1	95.0	94.5	95.8	94.3	94.6	96.2
1999	95.1	95.1	95.4	96.1	96.6	96.4	97.5	97.7	97.9	99.3	98.9	99.2
2000	100.0	101.0	101.9	102.6	102.5	102.9	104.5	103.9	103.7	103.6	103.5	102.8
2001	101.4	100.9	100.2	99.9	99.8	99.4	98.7	98.0	97.1	96.9	96.3	96.0
2002	96.0	95.8	96.0	96.9	97.4	97.5	97.7	98.3	98.6	98.9	99.6	100.4
2003	102.4	103.9	104.6	103.6	102.0	101.3	101.4	101.4	101.4	101.2	101.9	103.0
2004	103.5	103.5	104.0	105.0	105.7	106.4	106.4	106.8	107.9	108.4	108.1	107.1
2005	105.8	105.4	105.6	105.8	105.9	105.2	105.2	105.3	104.5	104.0	103.2	103.2
2006	103.1	103.0	102.5	101.9	102.4	103.5	103.6	103.4	103.5	102.9	102.8	103.1
2007	103.3	102.6	102.7	102.9	102.8	102.5	102.4	102.6	102.7	103.2	104.6	105.4
2008	106.1	106.6	108.0	108.1	108.2	108.8	110.0	110.1	109.1	106.6	102.0	98.9
2009	96.7	95.5	94.0	93.4	92.8	92.2	91.8	92.1	93.0	94.2	97.9	101.7
2010	104.3	105.4	105.9	106.8	107.1	106.4	104.8	104.3	104.3	105.0	106.1	105.9
2011	106.6	107.2	107.3	106.8	106.8	107.1	107.5	107.3	106.5	105.0	102.7	101.7
2012	100.7	100.0	99.7	99.3	98.6	97.9	97.1	96.5	96.4	97.2	97.8	98.1
2013	98.4	98.4	98.1	97.4	97.1	97.3	97.7	98.4	98.7	98.5	98.6	98.6
2014	98.4	98.0	97.7	98.0	98.6	98.9	99.1	98.8	98.2	97.8	97.3	96.7
2015	95.7	95.2	95.4	95.4	95.4	95.2	94.6	94.1	94.1	94.1	94.1	94.1
2016	94.7	95.1	95.7									

Change From Previous Month 0.60 % Change 1 Month 0.63% Change From 1 Year 0.30 % Change 12 Month 0.31%

Producer Price Index (China PPI)--Year-on-Year Changes												
Month Year	J	F	M	A	M	J	J	A	S	O	N	D
1993	17.90%	18.20%	21.30%	22.30%	26.00%	25.30%	25.70%	25.90%	24.60%	24.10%	22.50%	22.00%
1994	18.60%	16.50%	17.90%	19.60%	20.20%	19.10%	20.10%	18.10%	18.50%	18.20%	19.90%	19.90%
1995	20.70%	20.20%	19.50%	17.10%	13.90%	13.80%	13.50%	12.90%	12.90%	12.50%	11.10%	8.80%
1996	8.40%	7.10%	4.30%	3.00%	2.70%	2.30%	1.70%	1.50%	0.80%	0.30%	0.00%	0.40%
1997	0.10%	0.40%	0.50%	0.10%	0.10%	-0.40%	-0.60%	-0.90%	-0.90%	-0.90%	-0.60%	-0.90%
1998	-1.30%	-2.60%	-3.20%	-3.70%	-4.50%	-4.90%	-5.00%	-5.50%	-4.20%	-5.70%	-5.40%	-3.80%
1999	-4.90%	-4.90%	-4.60%	-3.90%	-3.40%	-3.60%	-2.50%	-2.30%	-2.10%	-0.70%	-1.10%	-0.80%
2000	0.00%	1.00%	1.90%	2.60%	2.50%	2.90%	4.50%	3.90%	3.70%	3.60%	3.50%	2.80%
2001	1.40%	0.90%	0.20%	-0.10%	-0.20%	-0.60%	-1.30%	-2.00%	-2.90%	-3.10%	-3.70%	-4.00%
2002	-4.00%	-4.20%	-4.00%	-3.10%	-2.60%	-2.50%	-2.30%	-1.70%	-1.40%	-1.10%	-0.40%	0.40%
2003	2.40%	3.90%	4.60%	3.60%	2.00%	1.30%	1.40%	1.40%	1.40%	1.20%	1.90%	3.00%
2004	3.50%	3.50%	4.00%	5.00%	5.70%	6.40%	6.40%	6.80%	7.90%	8.40%	8.10%	7.10%
2005	5.80%	5.40%	5.60%	5.80%	5.90%	5.20%	5.20%	5.30%	4.50%	4.00%	3.20%	3.20%
2006	3.10%	3.00%	2.50%	1.90%	2.40%	3.50%	3.60%	3.40%	3.50%	2.90%	2.80%	3.10%
2007	3.30%	2.60%	2.70%	2.90%	2.80%	2.50%	2.40%	2.60%	2.70%	3.20%	4.60%	5.40%
2008	6.10%	6.60%	8.00%	8.10%	8.20%	8.80%	10.00%	10.10%	9.10%	6.60%	2.00%	-1.10%
2009	-3.30%	-4.50%	-6.00%	-6.60%	-7.20%	-7.80%	-8.20%	-7.90%	-7.00%	-5.80%	-2.10%	1.70%
2010	4.30%	5.40%	5.90%	6.80%	7.10%	6.40%	4.80%	4.30%	4.30%	5.00%	6.10%	5.90%
2011	6.60%	7.20%	7.30%	6.80%	6.80%	7.10%	7.50%	7.30%	6.50%	5.00%	2.70%	1.70%
2012	0.70%	0.00%	-0.30%	-0.70%	-1.40%	-2.10%	-2.90%	-3.50%	-3.60%	-2.80%	-2.20%	-1.90%
2013	-1.60%	-1.60%	-1.90%	-2.60%	-2.90%	-2.70%	-2.30%	-1.60%	-1.30%	-1.50%	-1.40%	-1.40%
2014	-1.64%	-2.02%	-2.30%	-2.00%	-1.45%	-1.11%	-0.87%	-1.20%	-1.80%	-2.24%	-2.69%	-3.32%
2015	-4.32%	-4.80%	-4.56%	-4.57%	-4.61%	-4.81%	-5.37%	-5.92%	-5.95%	-5.90%	-5.90%	-5.90%
2016	-5.30%	-4.90%	-4.30%									

Change From Previous Month 0.60% Change From 1 Year 0.26%

China Consumer Price Index (China CPI)												
Month Year	J	F	M	A	M	J	J	A	S	O	N	D
2008	107.1	108.7	108.3	108.5	107.7	107.1	106.3	104.9	104.6	104.0	102.4	101.2
2009	101.0	98.4	98.8	98.5	98.6	98.3	98.2	98.8	99.2	99.5	100.6	101.9
2010	101.5	102.7	102.4	102.8	103.1	102.9	103.3	103.5	103.6	104.4	105.1	104.6
2011	104.9	104.9	105.4	105.3	105.5	106.4	106.5	106.2	106.1	105.5	104.2	104.1
2012	104.5	103.2	103.6	103.4	103.0	102.2	101.8	102.0	101.9	101.7	102.0	102.5
2013	102.0	103.2	102.1	102.4	102.1	102.7	102.7	102.6	103.1	103.2	103.0	102.5
2014	102.5	102.0	102.4	101.8	102.5	102.3	102.3	102.0	101.6	101.6	101.4	101.5
2015	100.8	101.4	101.4	101.5	101.2	101.4	101.6	102.0	101.6	101.3	101.5	101.6
2016	101.8	102.3	102.3									

Change From Previous Month 0.00 % Change 1 Month 0.00% Change From 1 Year 0.90 % Change 12 Month 0.89%

Source:
<http://app.finance.ifeng.com/data/mac/gypcc.php>
<http://data.eastmoney.com/cjsj/productpricesindex.aspx?p=1>
<http://value500.com/PPI.asp>